

panic button – Manual

Product introduction

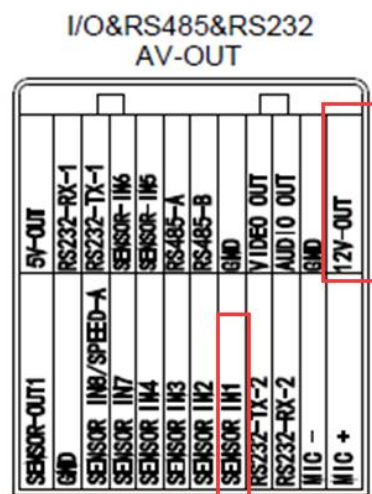
Emergency alarm button is to play the role of the police, through artificial manual emergency alarm button can achieve warning effect, with high reliability, long service life and low affected by the work environment, etc. With vehicle MDVR equipment, which can realize the emergency alarm, alarm linkage, can generate alarm data statistics, and report analysis and query.

1. Features :

- ★Metalbutton
- ★Real-time video pop-out by alarm linkage
- ★Alarm snap-shot
- ★to generate alarm reports for search and download

2.Wiring Guidance

To connect the two wires of the panic button to the two wires (SENSOR IN1 and 12V) from the 24pin I/O cables of MDVR. Defaulted high voltage trigger is 12V /5V.

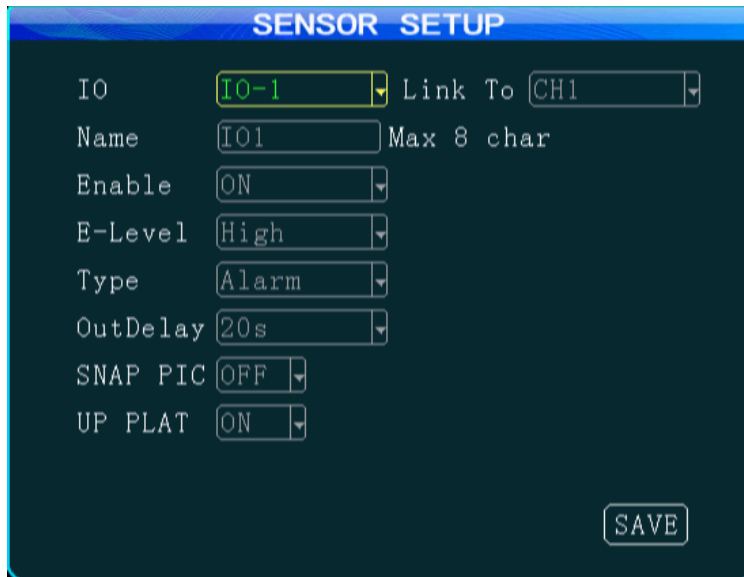


SENSOR IN1 and 12V-OUT is for panic button alarm input out of the MDVR 24pin I/O cables.

3、to Configure on the Firmware

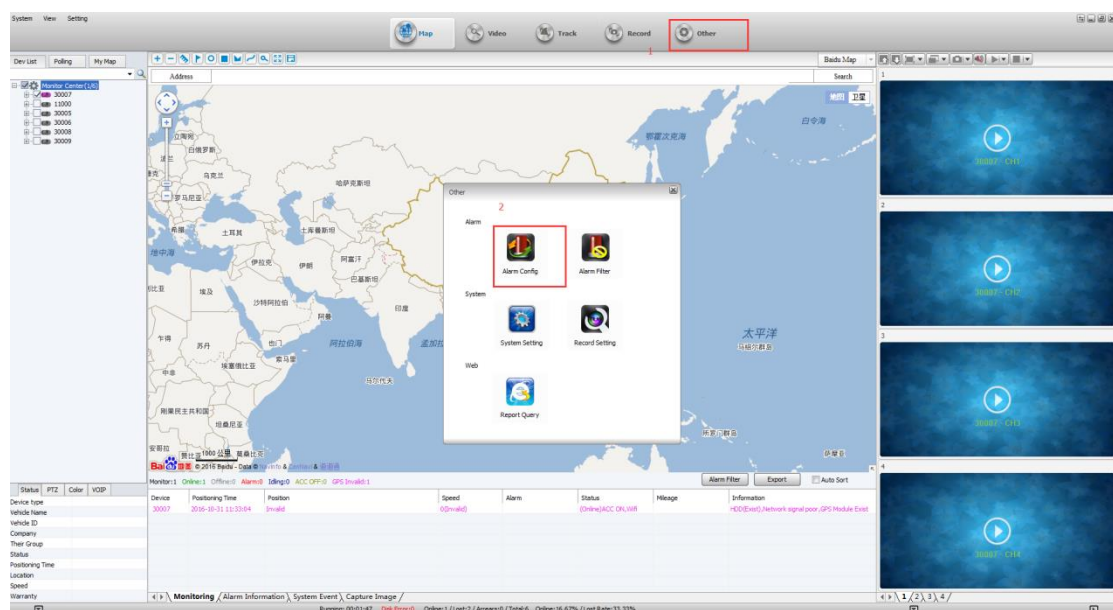
Enter the menu → Alarm → Sensor → enable the “IO-1” option

It uses the high voltage trigger to linkage the camera channel to enable real-time video pop-out when alarm triggered.

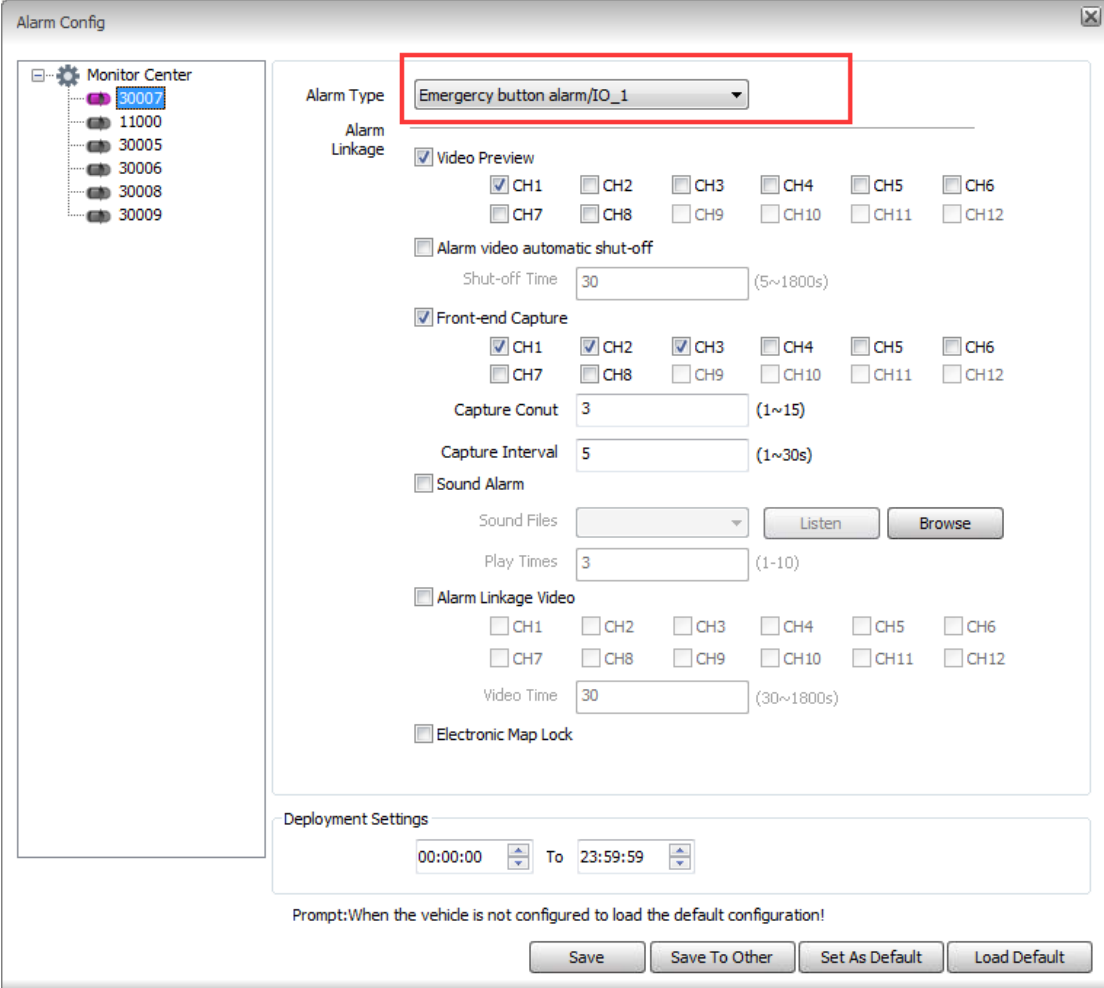


4、to configure on the IVMS Client Software

Login IVMS clientsoftware, click the “Other” → “alarm Config”



On the “Alarm Config” page, choose the “Alarm Type” as the “emergency button alarm/IO_1”, then save it.



The "Alarm Config" window is shown with the "Alarm Type" dropdown menu highlighted by a red box, set to "Emergency button alarm/IO_1".

Monitor Center

- 30007
- 11000
- 30005
- 30006
- 30008
- 30009

Alarm Type: Emergency button alarm/IO_1

Alarm Linkage

- ☒ Video Preview
 - ☒ CH1 ☐ CH2 ☐ CH3 ☐ CH4 ☐ CH5 ☐ CH6
 - ☐ CH7 ☐ CH8 ☐ CH9 ☐ CH10 ☐ CH11 ☐ CH12
- ☐ Alarm video automatic shut-off
 - Shut-off Time: 30 (5~1800s)
- ☒ Front-end Capture
 - ☒ CH1 ☒ CH2 ☒ CH3 ☐ CH4 ☐ CH5 ☐ CH6
 - ☐ CH7 ☐ CH8 ☐ CH9 ☐ CH10 ☐ CH11 ☐ CH12
 - Capture Conut: 3 (1~15)
 - Capture Interval: 5 (1~30s)
- ☐ Sound Alarm
 - Sound Files: Listen Browse
 - Play Times: 3 (1~10)
- ☐ Alarm Linkage Video
 - ☐ CH1 ☐ CH2 ☐ CH3 ☐ CH4 ☐ CH5 ☐ CH6
 - ☐ CH7 ☐ CH8 ☐ CH9 ☐ CH10 ☐ CH11 ☐ CH12
 - Video Time: 30 (30~1800s)
- ☐ Electronic Map Lock

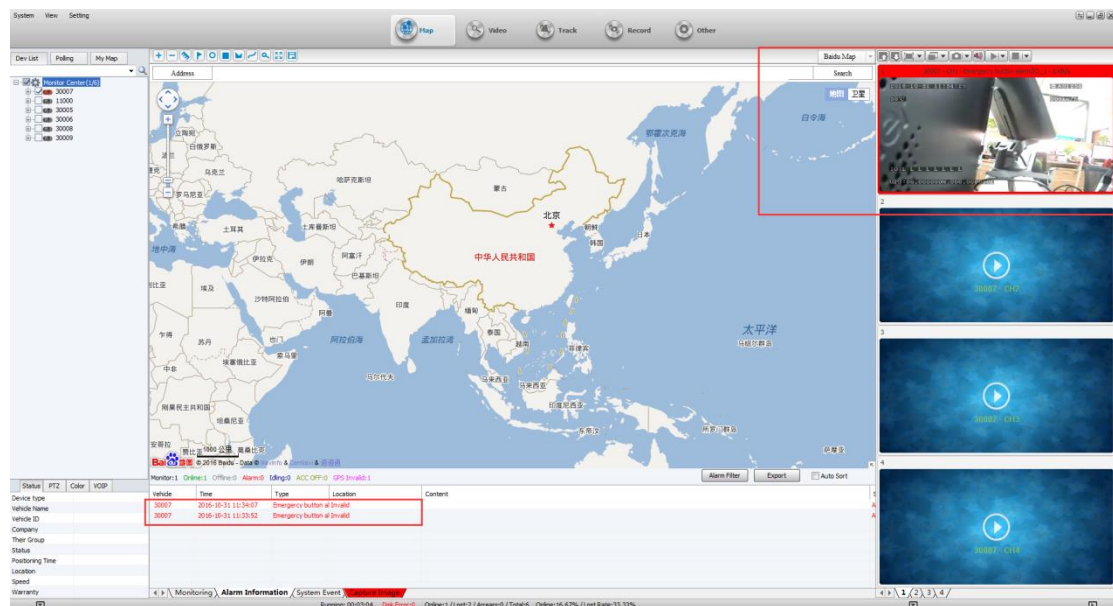
Deployment Settings

00:00:00 To 23:59:59

Prompt: When the vehicle is not configured to load the default configuration!

Save Save To Other Set As Default Load Default

When the driver presses the panic button, the alarm will be triggered, and sent to the server from the MDVR via 3G /4G. It will pop out a real-time video on the IVMS Client software at the same time.



There are other alarm type optional according to different type of alarm applications, please consult with our technical team for further information.

Thank you.

<End>