



For more vehicle monitoring solutions, scan Now!



ICARVISIONS (SHENZHEN) TECHNOLOGY CO.,LTD

Email:sale@icarvisions.com <https://www.icarvisions.com> Tel / Fax: +86-755-8601 9266

Tel:+86-755-86019299 (English) /+86-755-86019266 (Chinese)

Office Add: 4/F, Area D & F, Block 3, Tingwei Industry Park, Honglangbei 2 Road ,  
Baoan District, Shenzhen, China 518101

Factory Add:3/F, Block 1, Invengo RFID Industrial Park, Tongguan Road,  
Guangming New District, Shenzhen, China 518107



ICAR<sup>®</sup>  
VISIONS

**Intelligent Vehicle Surveillance Solutions**

\*Copyright © 2023 ICARVISIONS. All rights reserved.



Ai



GPS



4G



Telematics  
Cloud



Camera



MDVR

# About us

ICARVISIONS (SHENZHEN) TECHNOLOGY CO., LTD. is a global leader in Vehicle surveillance, Telematics & Video processing services. We are specializing in vehicle-related product development, manufacturing, and offering a wide range of Mobile Digital Video Recorders (MDVR) and Mobile Network Video Recorders (MNVR) solutions integrated with world-leading AI technologies like ADAS, DSM, face recognition, and Big Data which empowers us to become the pioneer of the Telematics industry.

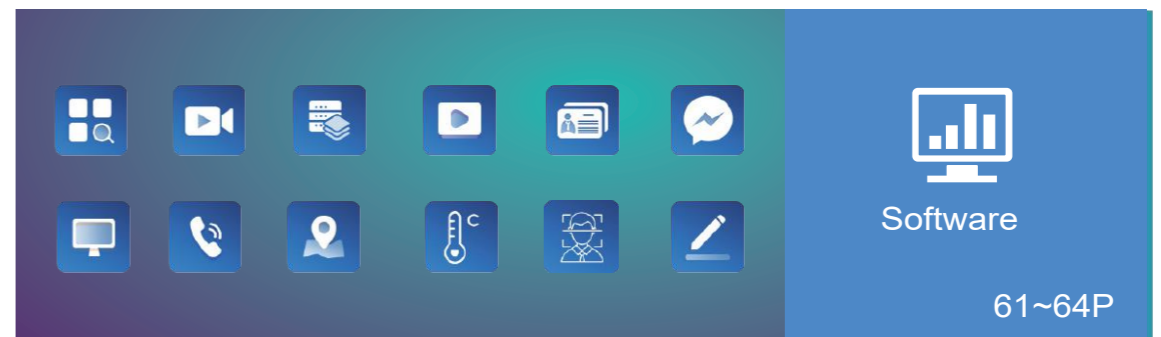
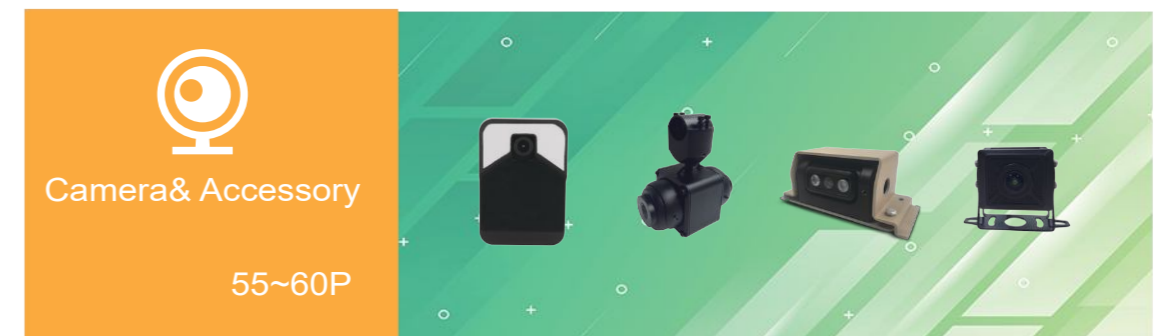
ICARVISIONS has been dedicated to this industry for more than 10years, and become a top mobile surveillance solution provider in China with a cutting edge team of more than 300 employees, 13 representative offices across China, and selling to over 137 countries worldwide. such as the Taxi project in UAE (>25,000 units), the logistic project in the UK (>40,000 units), Taxi project in Nanjing China (>12,000 units), Taxi project in Turkey (>11,000 units), heavy-duty trucks project in Guangdong (>35,000 units), coach project in Shandong (20,000 units), and other projects of automobile manufacturers like China FAW Group (>40,000 units), Shaanxi Automobile Group (>8,000 units) Zoomlion Heavy Industry (>5,000 units) China HGVs (>140,000 units),etc.

As a National High-tech Enterprise, our products are compliant with the highest standards like the China Ministry of Transport Standard, Ministry of Public Security GB-T19056, and carry certificates such as ISO9001, IATF16949-2016 Automotive Quality Standard, OHSAS18001 Occupational Health and Safety Management Systems,E-mark, ROHS, CE, FCC, US MIL-STD-810G for vibration & shock, EN50155,IP67,IK08,ISO14001, ISO45001,ISO7637-2 international electromagnetic compatibility vehicle standard, IEC60950 safety of information technology equipment standard, EN50155 Railways Applications Electronic Equipment Used on Rolling Stock, etc.

Taking rapid pace of product innovation and stable quality in our industry-defining Mobile DVR combining with HD real-time video, Telematics, Ai, and our fleet management platform software application, we are trying to build a better-connected telematics world.



## Content



# Worldwide Solutions



UK  
Vehicle>40,000 units

Brazil  
Vehicle>40,000 units

South Africa  
Truck>25,000 units

Turkey  
Vehicle>15,000 units

UAE  
Taxi>25,000 units

Ecuador  
Vehicle>10,000 units

Nanjing  
Taxi>12,000 units

USA  
Law enforcement>10,000 units

Guangdong  
Truck>35,000 units

Shandong  
Coach>20,000 units

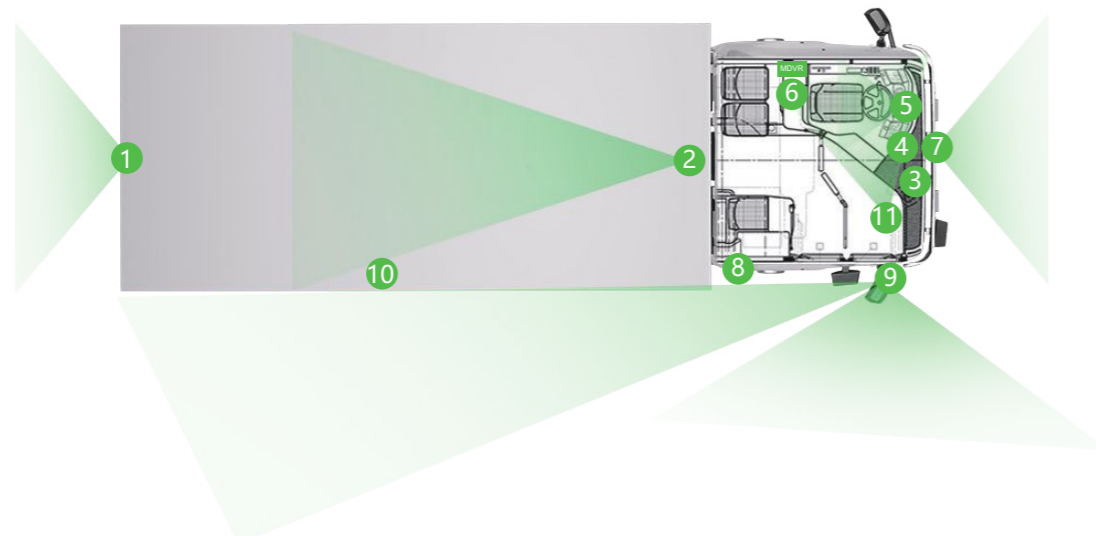
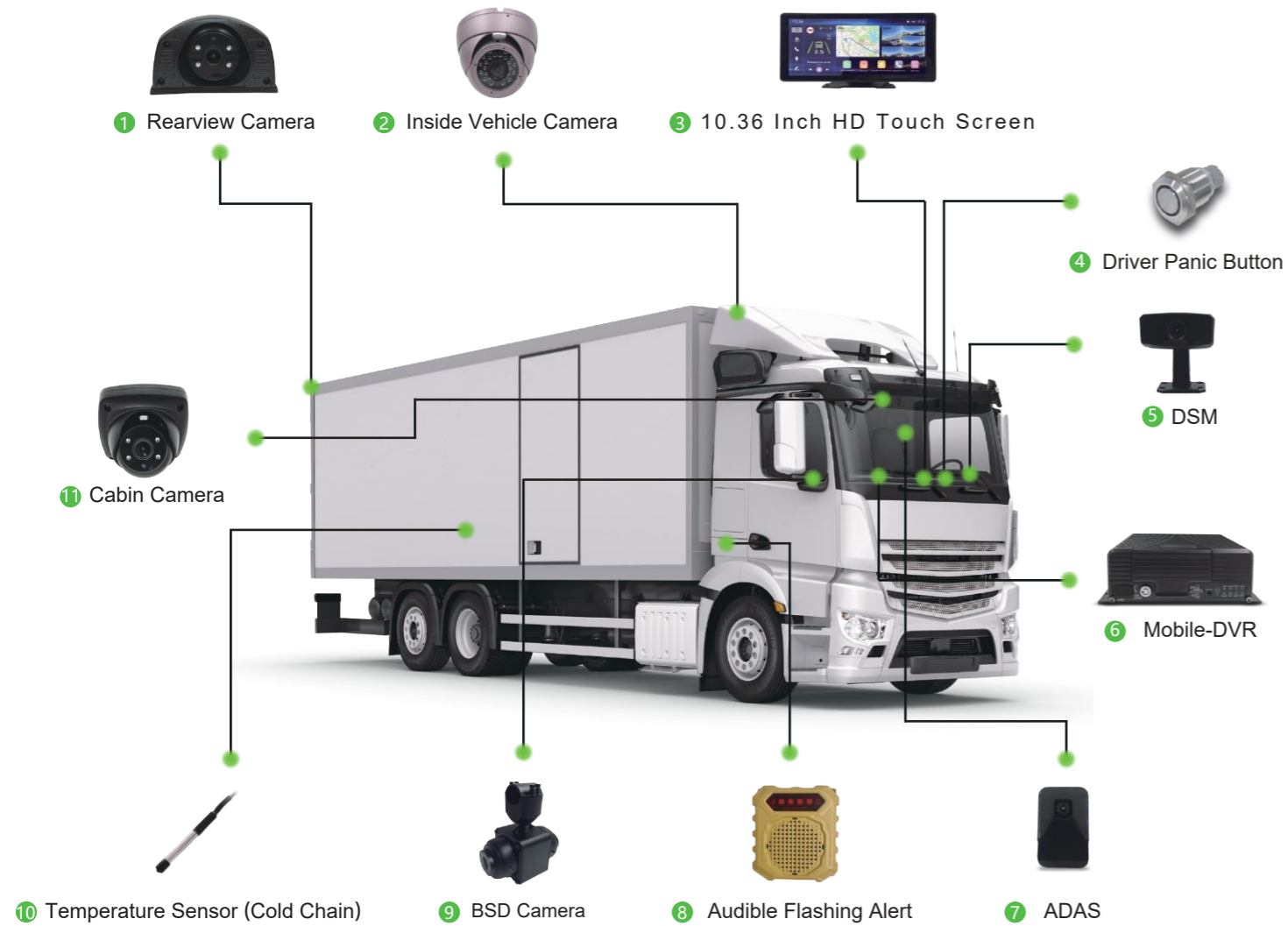
China FAW Group  
Truck>40,000 units

China HGVs  
Vehicles> 140,000 units

# Offices Across China



# Cargo Logistic

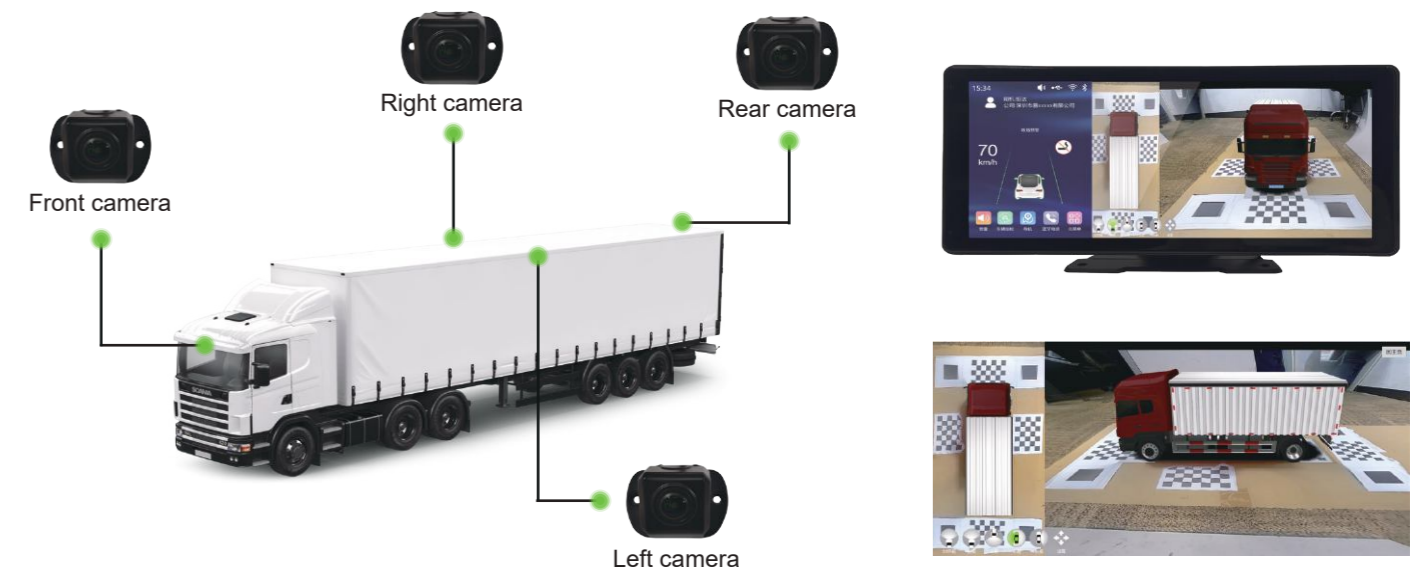


## Blind Spot Detection (BSD)



Dual lens design, total detection range >12 meters  
Easily installed to the side mirrors

## Panoramic 360



## Anti-Theft Detection



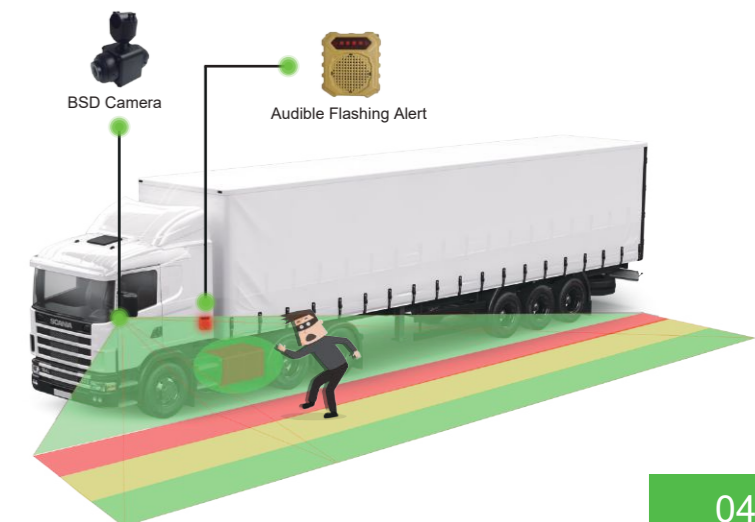
\* The UPS battery can support the BSD camera system continue to work after ACC-off.

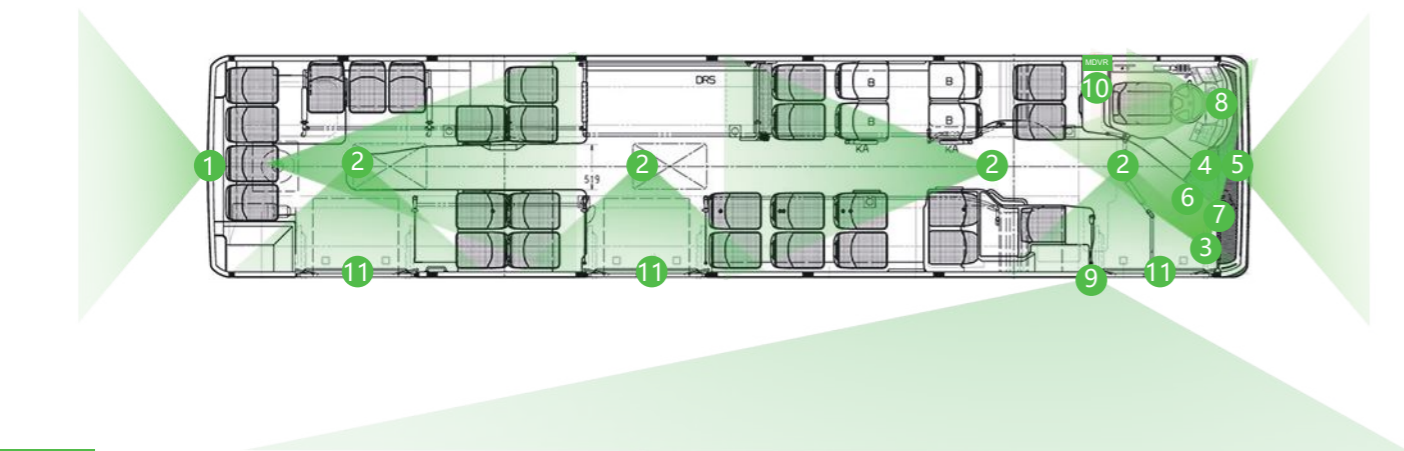


\* The audible flashing alert is triggered when people detected in the BSD area.



\* The alert is sent to the Client software, and video clip and snap shots of the alert was recorded.





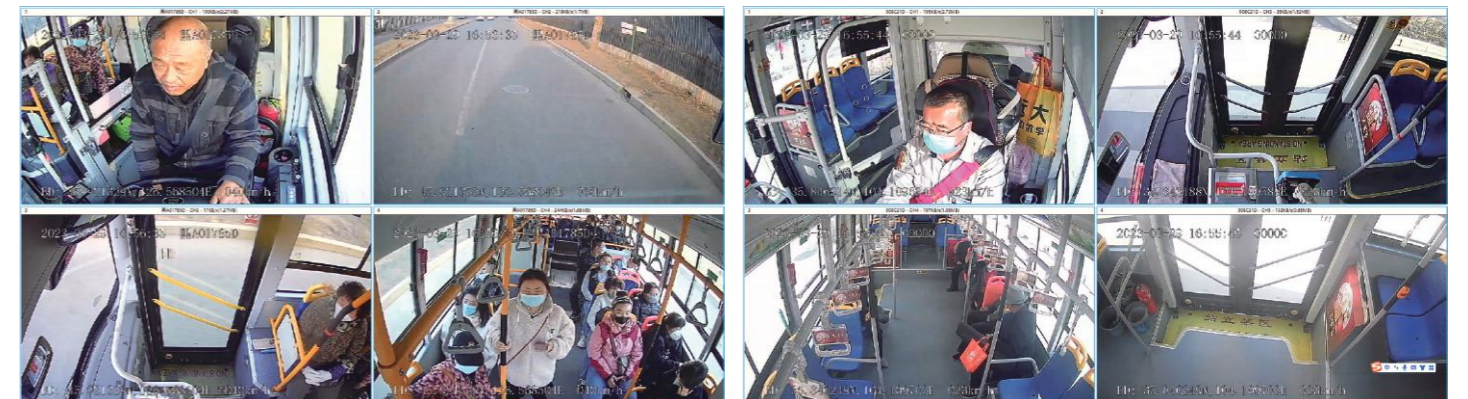
Passenger Counter

Passenger Counter

Passenger Counter

RJ45

Passenger counting technology for public vehicles  
Designed for accurately counting individuals entering or leaving public transport vehicles.  
1-3 Doors supported.

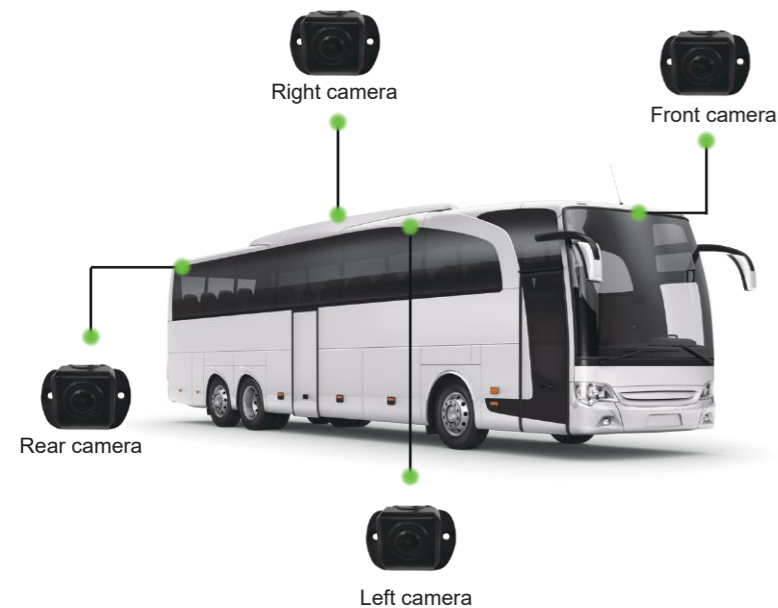


 IP67  
Waterproof



05

## Panoramic 360



## 10.36" Smart Android Touch Screen Monitor



JK12A



Panoramic 360



Integration with MDVR



Video Footage



AI Early Alarm



Driving Evidence



Voice Assistance



Navigation



Bluetooth Phone



FM Radio



Multimedia



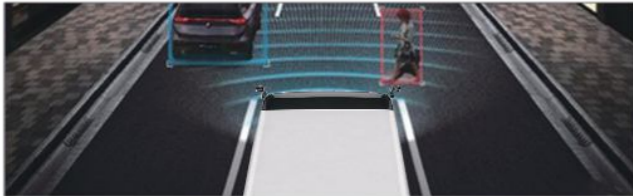
4G / wi-Fi



Android Apps

## Advanced Driver Assistance System(ADAS)

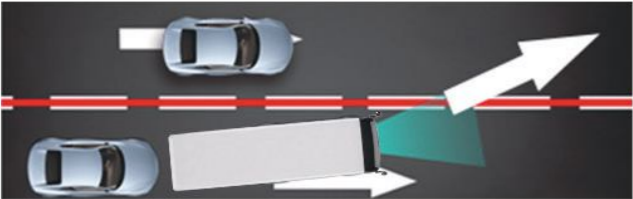
### Pedestrian Collision Warning



### Safe Distance Warning



### Lane Departure Warning



### Forward Collision Warning



## Driver Status Monitor(DSM)



Yawning



Eyes Closing



Smoking



Making Phone Calls



Distraction

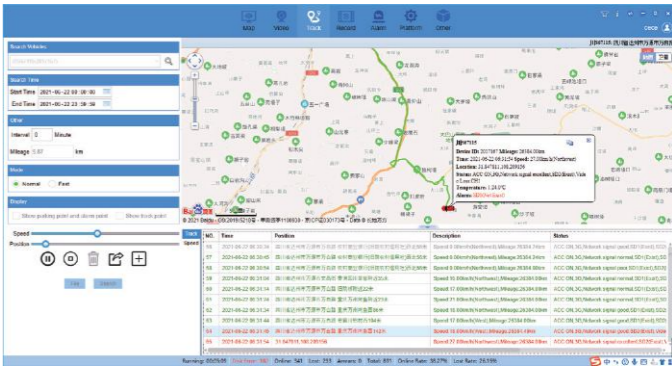
## Software

### PC Client

#### Fleet Realtime Streaming And Tracking

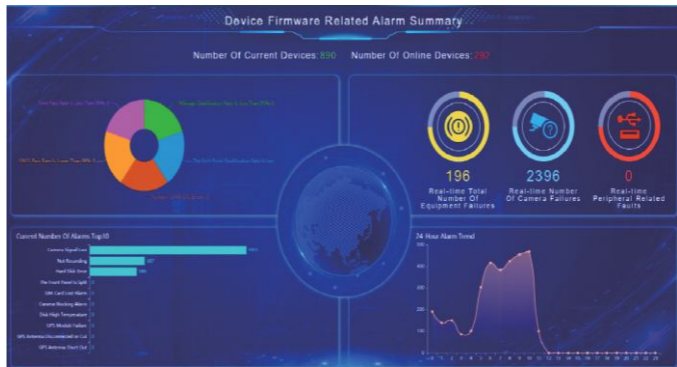


#### History Tracking And Alarms

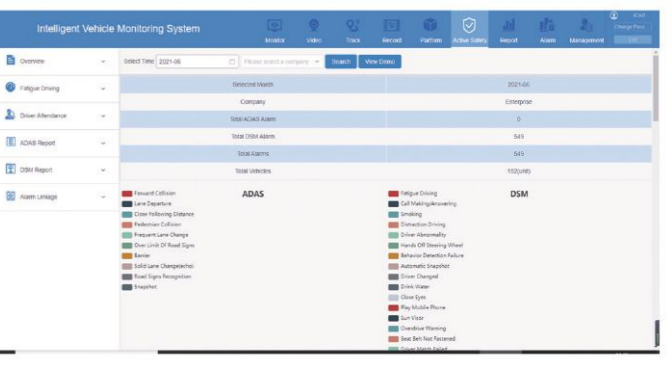


### Web Client

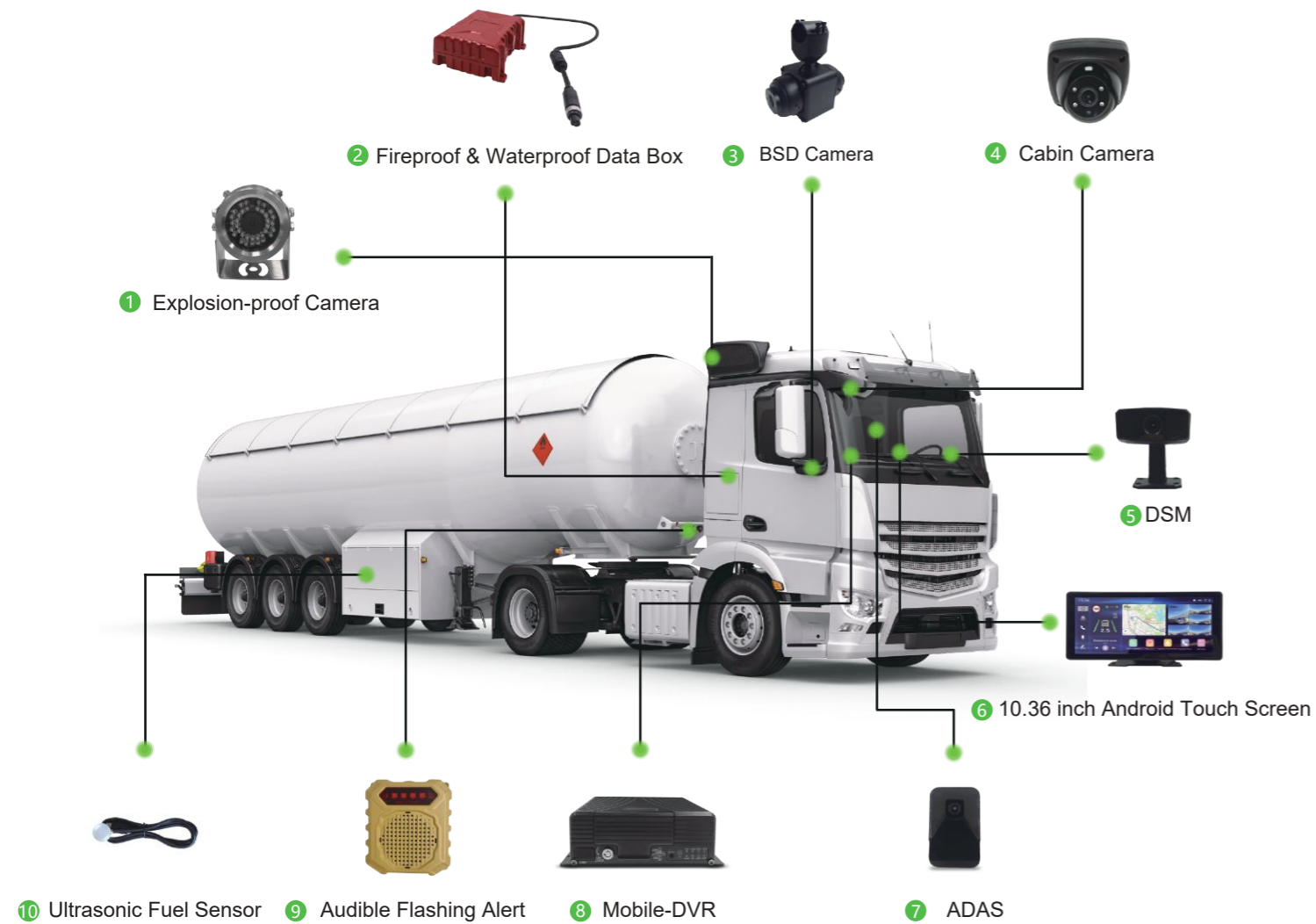
#### Visualized Page Designed For Specific Vehicle Project



#### Detailed Reporting And Alarm System



# Fuel Tanker



## Fireproof & Waterproof Data box



Connects to MDVR, withstand a fire burning at 1100°C for 15 minutes and water under 100 meters.

Data could be recorded safely in the fire or flood for vehicle crashes.

## Blind Spot Detection (BSD)



Dual lens design, total detection range >12 meters  
Easily installed to the side mirrors

## Ultrasonic Fuel Sensor



Real-time fuel volume monitoring.  
Fuel theft alarm by detecting fuel volume dropdown in a short time.



# Construction Truck

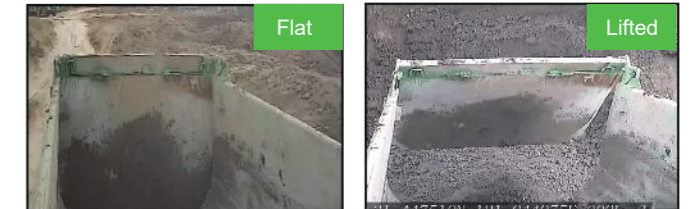


## Container Recognition

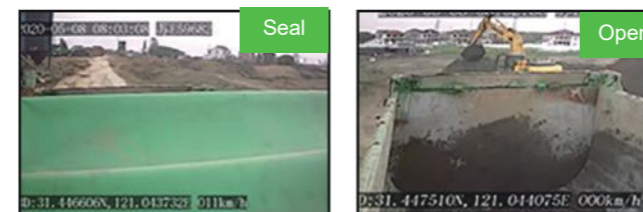
Container Detection: Empty / Loaded



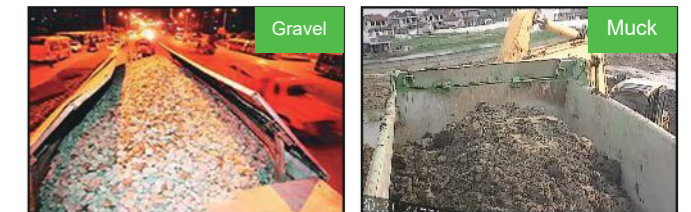
Container Position Detection: Flat / Lifted



Container Detection: Seal/ Open



Container Position Detection: Gravel / Muck



## Blind Spot Detection (BSD) & Audible Flashing Alert



Dual lens design, total detection range >12 meters  
Easily installed to the side mirrors



To warn the people that the vehicle is approaching  
thereby to keep away and avoid collision.



# Law Enforcement



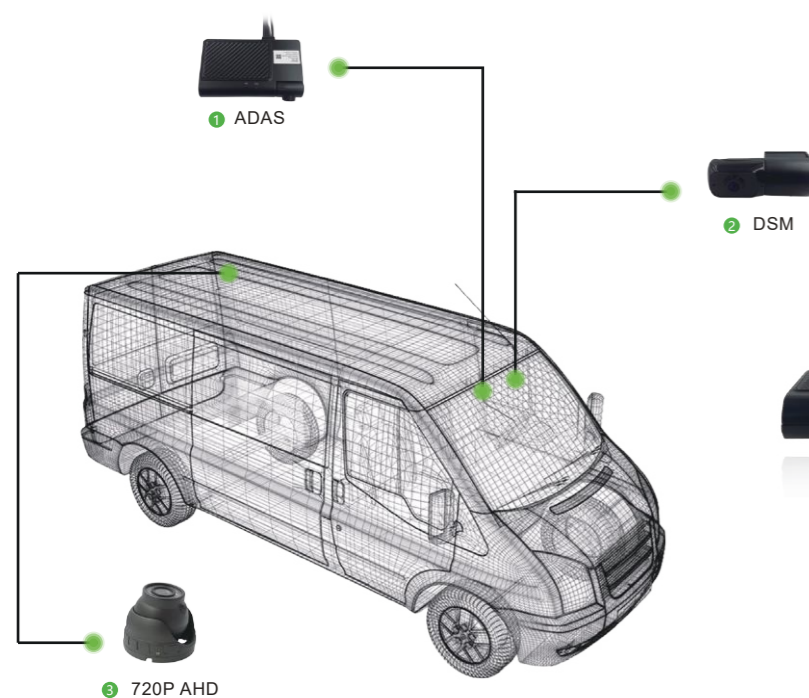
## Evidence Recorded



# Dash Cam Solution



2 channels solution

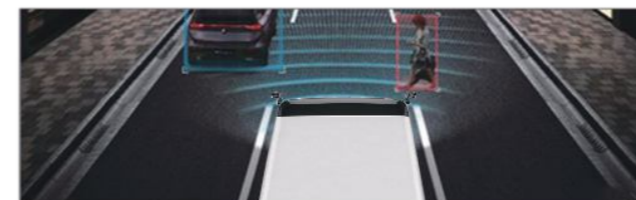


3 channels solution



## Advanced Driver Assistance System (ADAS)

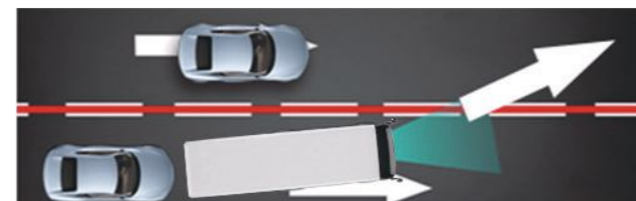
Pedestrian Collision Warning



Safe Distance Warning



Lane Departure Warning



Forward Collision Warning



## Driver Status Monitor(DSM)



Yawning



Eyes Closing



Smoking



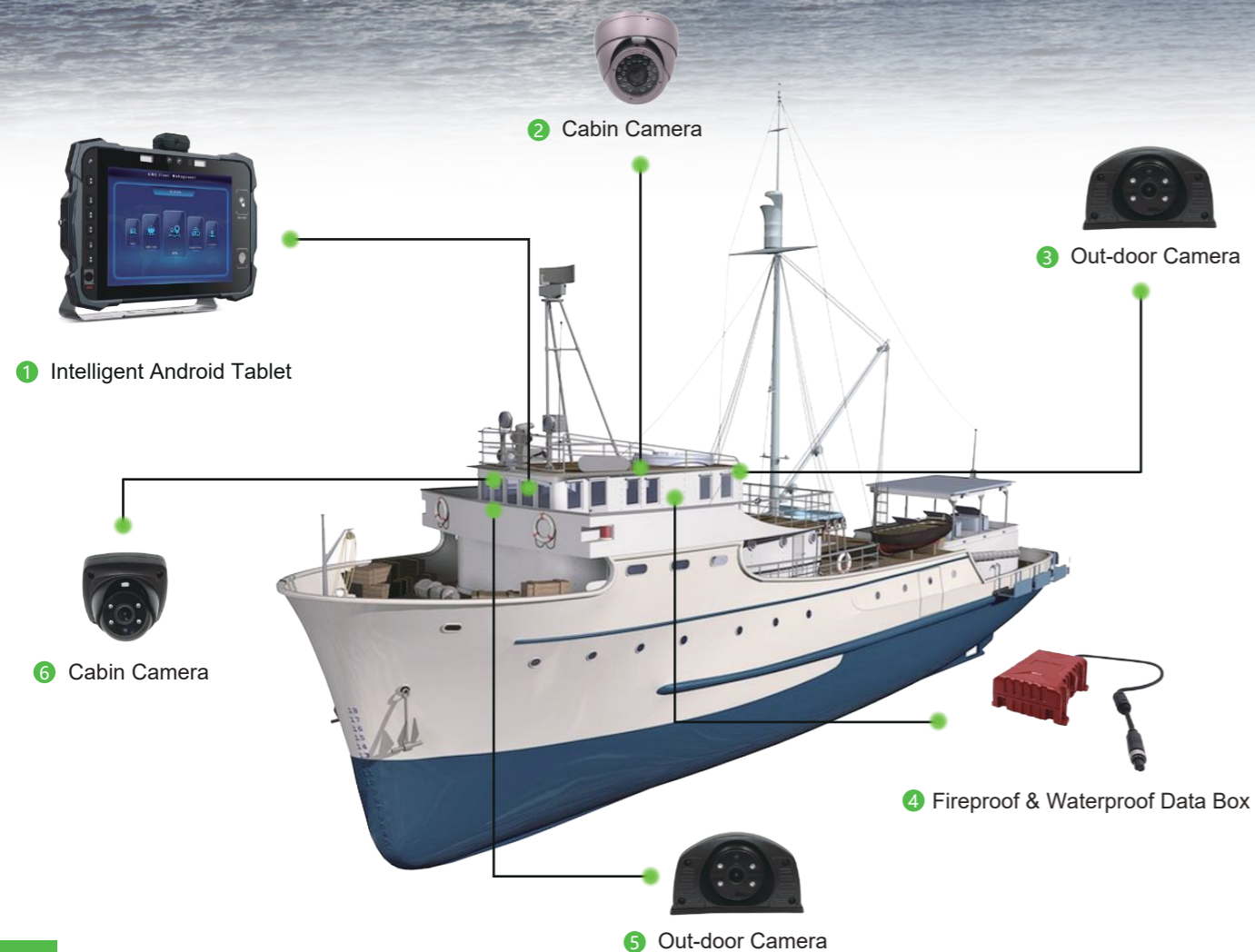
Making Phone Calls



Distraction



Ship



## Intelligent Android Tablet



Crew Management



Waste Water Report



Maritime Notice



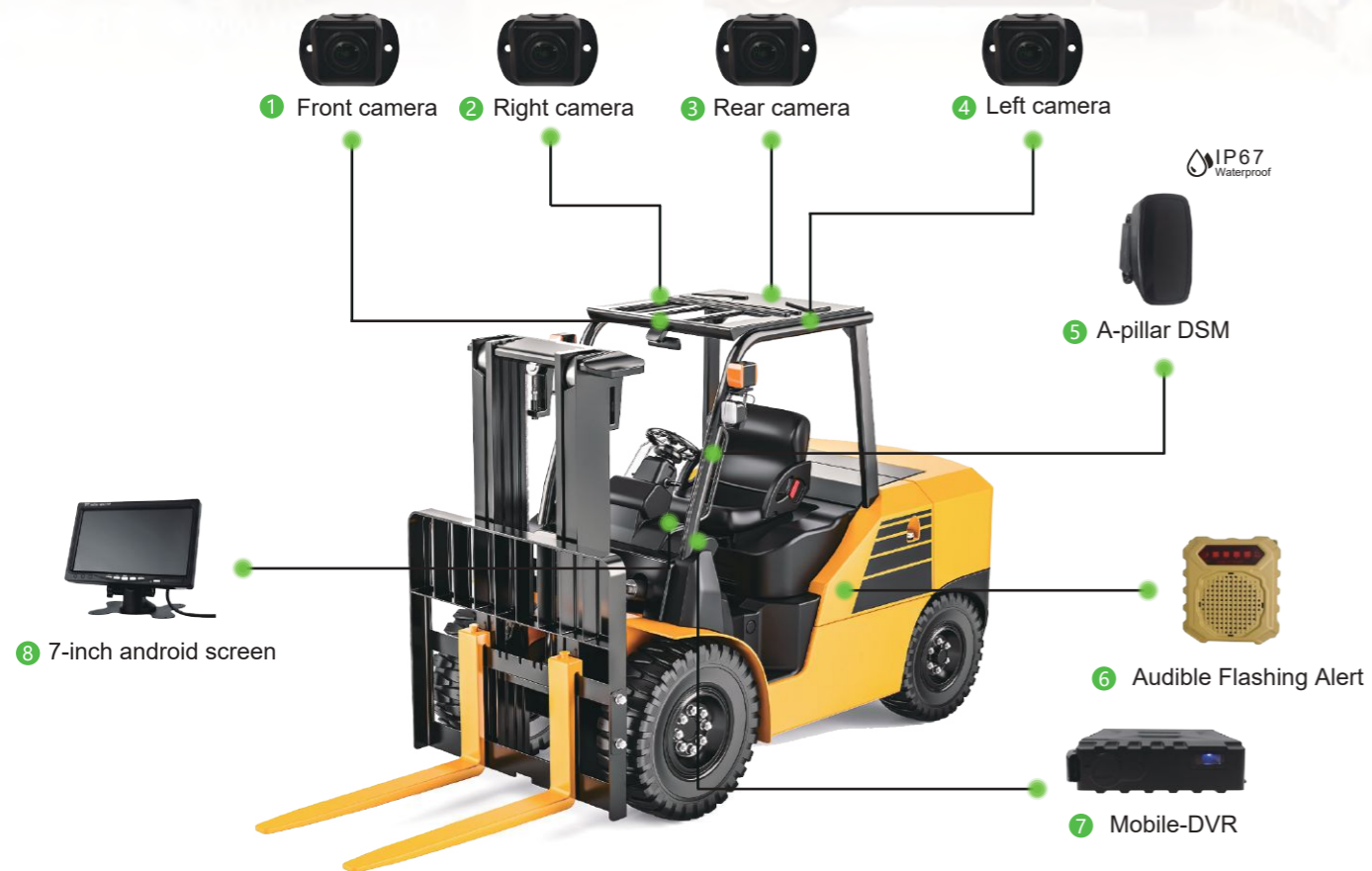
Maintenance Log

## Fireproof & Waterproof Data Box

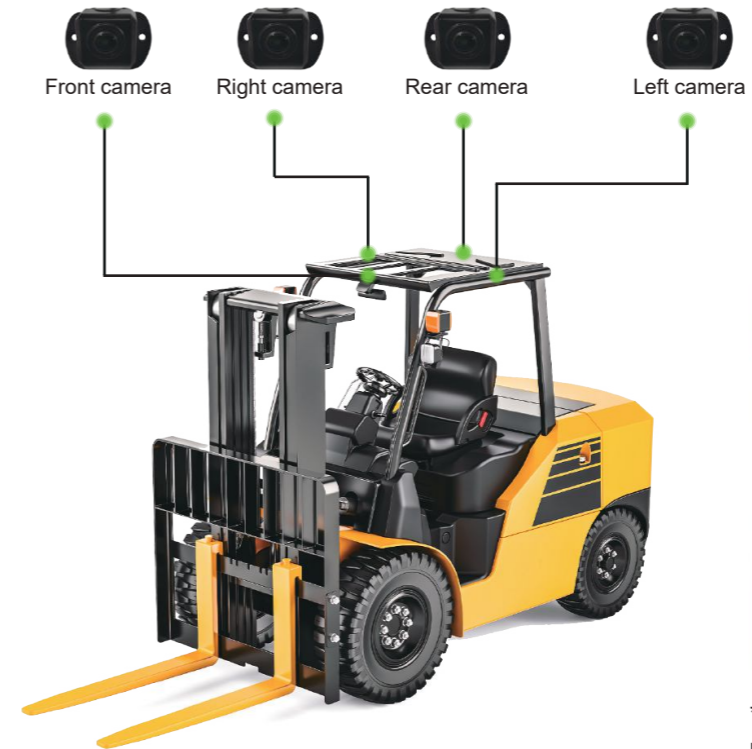


Connects to MDVR, withstand a fire burning at 1100°C for 15 minutes and water under 100 meters. Data could be recorded safely in the fire or flood for vehicle crashes.

# Forklift



## Panoramic 360



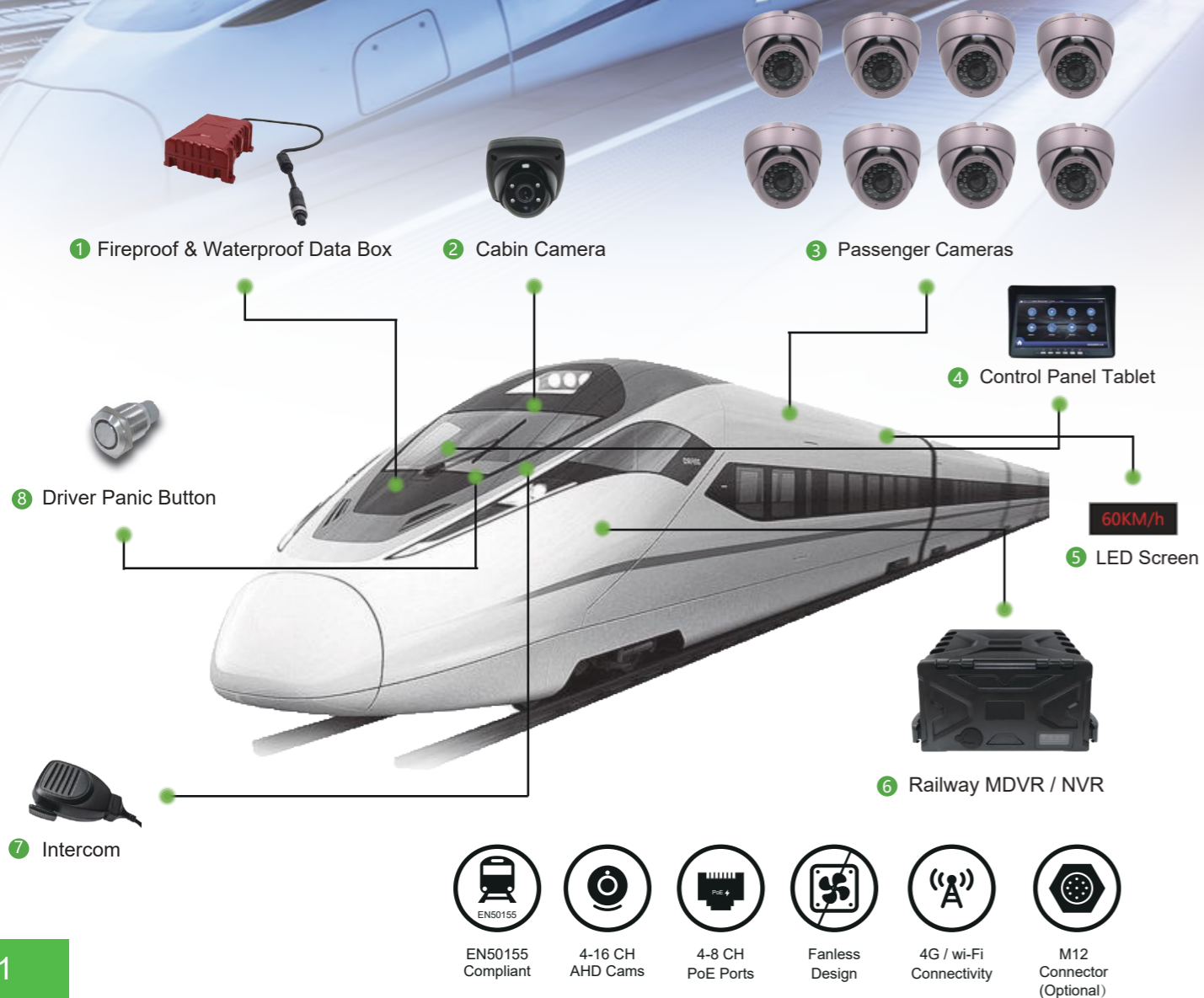
\* 360 view to help the driver to avoid hitting people or objects.

## Audible Flashing Alert

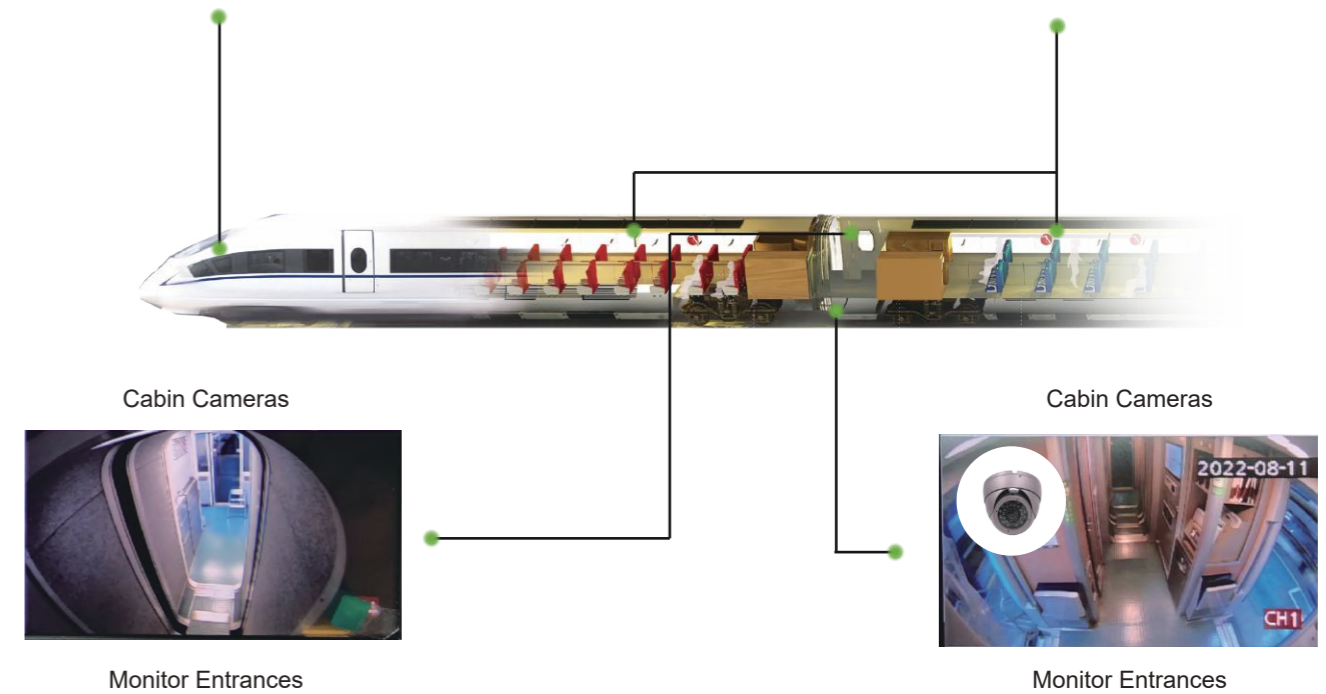


\* To warn the people that the vehicle is approaching thereby to keep away and avoid collision.

# Train



## Train Surveillance Solution



## Fireproof & Waterproof Data Box



Connects to MDVR, withstand a fire burning at 1100°C for 15 minutes and water under 100 meters. Data could be recorded safely in the fire or flood for vehicle crashes.

# JH0AN

Support H.265 / H.264  
SSD Ai Moblie DVR, 4+1 CH 1080P  
Waterproof IP67, Hand-sized

- Waterproof & Dustproof IP67, Hand-size Dimension 38 \* 146 \*155 mm
- Up to 5 channels A/V recording, 4 x 1080P AHD + 1 x 1080P IPC
- Support SSD and SD card (up to 512 GB) storage
- Support AI function ADAS / DSM / BSD optional
- On board UPS 8 seconds delay power-off for data protection
- Built-in an integrated 3-axis G-SENSOR + 3-axis gyroscope (a total of 6 axes), to detect and trigger the alarm of rapid acceleration, harsh braking, crash and sharp cornering.
- 8V~36V wide voltage power supply



## Specification

System	Language Operation Interface Password Security	English / Chinese Graphical User Interface ( OSD menu) 2 Levels: Administrator & User		
AI Algorithm	DSM (Optional)	Yawning Detection Smoking Detection Distraction Detection Camera Blocked Detection	Eyes Closing Detection Making Phone Calls Detection Driver Absence Detection Eyes Blocked Detection	
	ADAS (Optional)	Lane Departure Warning Froward Collision Warning	Safe Distance Warning Pedestrian Collision Warning	
	BSD (Optional)	Support Blind Spot Detection Cameras (2 channels)		
Video	Video Input	A:Supports 4 channels CIF/HD1/D1/960H camera Video input B:Supports 4 channels 720P AHD camera Video input C:Supports 4 channels 1080P AHD camera Video input D:Supports 2-CH 720P AHD + 2-CH 960H analog mixing Video input E:Supports 1-CH 720P/1080P IPC + 4-CH 720P AHD/960H/D1/CIF Video input F:Supports 1-CH 720P/1080P IPC + 4-CH 1080P AHD Video input		
	Video Output Video Display Signal System Image Compression	1 Channels ( Rear Panel on RJ45&AV-OUT Port ) Single picture, 1~5 pictures PAL / NTSC ( PAL@100 frame 1080P / sec; NTSC@120 frame 1080P /sec ) H.265/H.264 Main profile		
Audio	Audio Input Audio Output Record Format	4 Channels 1 Channel Synchronized A/V recording		
Recording & Storage	Image Resolution	CIF / HD1 / D1 / 960H / 720P / 1080P optional		
	Video Coding	ISO14496-10 Industry Standard		
	Video Bit Rate	CIF: 1536Kbps ~ 128Kbps, HD1/D1: 2048Kbps ~ 400Kbps, 960H: 2048Kbps ~ 400Kbps, 720P/1080P:4096Kbps ~ 400Kbps Select from 8 Levels of Video Image Quality ranging from 1(Highest) to 8(Lowest)		
	Audio Bit Rate	40Kbps		
	Storage	1 SSD and 1 SD card ( at 3G/4G/WIFI model option)		
Alarm	Alarm Input Alarm Output	4 Channels, Select Trigger for either less than 1VDC or greater than 5VDC 2 Channel, 12V output		
Communication Ports	RS485 RS232 Speed RJ45 Network USB	1 Port for PTZ control or Data Device usage 1 Port for communication or data usage 1 Channel 1 Port of RJ45(100M Ethernet port), For connection to an IP camera with maximum of 1080P 1 Ports for USB 2.0, download video files & upgrade firmware		
Wireless Communication	3G/4G* Wi-Fi*	Supported Internal 802.11b/g/n/ac optional		
GPS	Int'l Standard GPS	Internal GPS module. Real-time geographic coordinates, speed information		
G-Sensor + Gyroscope	Internal G-Sensor +Gyroscope	Support an integrated 3 axis accelerometer (G-Sensor) and 3 axis gyroscope, to detect crash, harsh breaking, acceleration and cornering.		
Software	PC Playback IVMS	A/V, GPS, Mapview, Speed, G-Sensor, etc. files available for playback on PC. Limited playback is also available on MDVR Wireless ( require Wi-Fi or cellular Option ) real-time A/V monitoring, GPS, alarms, etc.		
Software Upgrade	Local or Remotely	Upgrade through the USB2.0 or remotely via IVMS platform		
Voltage Input	+8 ~ +36V	8 ~ 36VDC Please check operational voltage of vehicle prior to the installation of the MDVR and its accessories to prevent possible damage		
Voltage Output	12V	12V ( +/-0.2V ) , Max 3A		
ACC Detection	≤4V ≥6V	Power-off Power-on		
Video Input Resistance	75Ω	75Ω		
Video Output Voltage	2Vp-p	2VP-P CVBS output analog signal, screen input requires 75Ω resistance		
I / O Port	<1V >5V	Low voltage trigger High voltage trigger		
Operational Temperature	-25 C ~ 80 C	Install in well ventilated area, protected from moisture, heat, dust and vibration. Confined by SSD temperature also.		
Weatherproof/Water Proof	IP67			
Dimensions	146*155*38mm			
Order Model	JH0-GNN	JH0-GNW	JH0-GFN	JH0-GFW
Description	GPS	GPS Wi-Fi 5.8G	GPS 4G	GPS 4G Wi-Fi 5.8G

\*Images and specs may vary from products, please contact our sales for updated information.

# JH16

16 channels 720P Mobile DVR,  
Dual Hard Disk, IP67

- 16 x 720P AHD Video input, support 960P AHD camera
- Waterproof & Dustproof IP67
- 2 HDD / SSD slots, and 1 SD card (up to 512GB) for backup (at 4G / Wi-Fi model option)
- Internal G-sensor, GPS, 4G, Wi-Fi 5.8G
- Anti-Shock and Anti-Vibration MIL-STD-810G certified
- Hard drive auto-heating startup in freezing weather
- Operating temperature - 40°C ~ + 80°C
- 24V-36V wide voltage power supply

## Specification

System	Language	English / Chinese
	Operation Interface	Graphical User Interface ( OSD menu )
	Password Security	2 Levels: Administrator & User
Video	Video Input	Supports 16 channels 720P AHD camera Video input Supports 16 channels CIF/HD1/D1/960H camera Video input Supports 8-CH 720P AHD + 8-CH CIF/HD1/D1/960H analog mixing Video input
	Video Output	2 Channels (Front Panel 3.5mm Jack, Rear Panel on 9pin AV-OUT Port)
	Video Display	Single picture, 1~16 pictures
	Signal System	PAL / NTSC ( PAL@400 frame 720P/sec; NTSC@480 frame 720P/sec )
Audio	Image Compression	H.264 Main profile
	Audio Input	16 Channels
	Audio Output	2 Channels (Front Panel 3.5mm Jack, Rear Panel on 9pin AV-OUT Port)
	Record Format	Synchronized A/V recording
Recording & Storage	Image Resolution	CIF / HD1 / D1 / 960H / 720P optional
	Video Coding	ISO14496-10 Industry Standard
	Video Bit Rate	CIF: 1536Kbps ~ 128Kbps, HD1/D1: 2048Kbps ~ 400Kbps, 960H: 2048Kbps ~ 400Kbps 720P:4096Kbps ~ 400Kbps Select from 8 Levels of Video Image Quality ranging from 1(Highest) to 8(Lowest)
	Audio Bit Rate	40Kbps
Alarm	Storage	Up to 2*2TB HDD/SSD and 1 SD card for backup (at 3G/4G/WIFI model option)
	Alarm Input	8 Channels, Select Trigger for either less than 1VDC or greater than 5VDC
	Alarm Output	2 Channel, 12V output
Communication Ports	RS485	1 Port for PTZ control or Data Device usage
	RS232	2 Port for communication or data usage
	CAN	1 Port,CAN-H and CAN-L
	RJ45 Network	1 Port of RJ45, For connection to LAN or testing etc
Wireless Communication	USB	2 ports. The front one is USB 3.0 to download video files & upgrade firmware; the rear panel one is USB 2.0 to connect with external device.
	3G	3G (HSDPA / HSDPA / WCDMA / EVDO / TD-SCDMA) optional Internal module
	4G	4G (TDD-LTE / FDD-LTE) optional module to match local cellular carrier
	Wi-Fi	Internal Wi-Fi 802.11b/g/n ( 2.4 / 5.8 Ghz) optional
GPS	Int'l Standard GPS	Internal GPS module. Real-time geographic coordinates, speed information
G-Sensor	Internal G-Sensor	Supports 3 Axis Motion Detection with user set ranges, for X, Y and Z coordinates
Software	PC Playback	A/V, GPS, Mapview, Speed, G-Sensor, etc. files available for playback on PC. Limited playback is also available on MDVR
Software Upgrade	IVMS	Wireless (require Wi-Fi or cellular Option) real-time A/V monitoring, GPS, alarms, etc.
Software Upgrade	Local or Remotely	Upgrade through the front USB3.0 or remotely via IVMS platform
Voltage Input	+24V~+36V	24 ~ 36VDC Please check operational voltage of vehicle prior to the installation of the MDVR and its accessories to prevent possible damage
Voltage Output	12V	12V(+/-0.2V),Max 3A
ACC Detection	≤4V	Power-off
	≥6V	Power-on
Video Input Resistance	75Ω	75Ω
Video Output Voltage	2Vp-p	2VP-P CVBS output analog signal, screen input requires 75Ω resistance
I / O Port	<1V	Low voltage trigger
	>5V	High voltage trigger
Operational Temperature	-40 C ~ 80 C	Install in well ventilated area, protected from moisture, heat, dust and vibration
Dimensions	203x208x93.5mm	



Order Model	JH16-NNN	JH16-GNN	JH16-GNW	JH16-GFN	JH16-GFW
Description	N/A	GPS	GPS Wi-Fi 5.8G	GPS 4G	GPS 4G Wi-Fi 5.8G

\*Images and specs may vary from products, please contact our sales for updated information.

# JH16-8HD

8 channels 1080P Mobile DVR,  
Dual Hard Disk, IP67

- Waterproof & Dustproof IP67
- 2 HDD / SSD slots, and 1 SD card (up to 512GB) for backup (at 4G / Wi-Fi model option)
- Internal G-sensor, GPS, 4G, Wi-Fi 5.8G
- Anti-Shock and Anti-Vibration MIL-STD-810G certified
- Hard drive auto-heating startup in freezing weather
- Operating temperature - 40°C ~ + 80°C
- 24V~36V wide voltage power supply



## Specification

System	Language	English / Chinese
	Operation Interface	Graphical User Interface (OSD menu)
	Password Security	2 Levels: Administrator & User
Video	Video Input	Supports 8 channels 1080P AHD camera Video input Supports 8 channels 720P AHD camera Video input Supports 8 channels CIF/HD1/D1/960H camera Video input Supports 4-CH 1080P AHD + 4-CH 720P AHD analog mixing Video input Supports 4-CH 1080P AHD + 4-CH CIF/HD1/D1/960H analog mixing Video input Supports 4-CH 720P AHD + 4-CH CIF/HD1/D1/960H analog mixing Video input
		2 Channels (Front Panel 3.5mm Jack, Rear Panel on 9pin AV-OUT Port)
		Single picture, 1~8 pictures
		PAL / NTSC ( PAL@200 frame 1080P/sec; NTSC@240 frame 1080P/sec )
		H.264 Main profile
Audio	Audio Input	8 Channels
	Audio Output	2 Channels (Front Panel 3.5mm Jack, Rear Panel on 9pin AV-OUT Port)
	Record Format	Synchronized A/V recording
Recording & Storage	Image Resolution	CIF / HD1 / D1 / 960H / 720P/1080P optional
	Video Coding	ISO14496-10 Industry Standard
	Video Bit Rate	CIF: 1536Kbps ~ 128Kbps, HD1/D1: 2048Kbps ~ 400Kbps, 960H: 2048Kbps ~ 400Kbps 720P:4096Kbps ~ 400Kbps 1080P:4096Kbps ~ 400Kbps Select from 8 Levels of Video Image Quality ranging from 1(Highest) to 8(Lowest)
		40Kbps
		Up to 2*2TB HDD/SSD and 1 SD card for backup (at 3G/4G/WIFI model option)
Alarm	Alarm Input	8 Channels, Select Trigger for either less than 1VDC or greater than 5VDC
	Alarm Output	2 Channel, 12V output
Communication Ports	RS485	1 Port for PTZ control or Data Device usage
	RS232	2 Port for communication or data usage
	CAN	1 Port,CAN-H and CAN-L
	RJ45 Network	1 Port of RJ45, For connection to LAN or testing etc
Wireless Communication	USB	2 ports. The front one is USB 3.0 to download video files & upgrade firmware; the rear panel one is USB 2.0 to connect with external device.
	3G	3G (HSPA / HSDPA / WCDMA / EVDO / TD-SCDMA) optional Internal module
	4G	4G (TDD-LTE / FDD-LTE) optional module to match local cellular carrier
GPS	Int'l Standard GPS	Internal GPS module. Real-time geographic coordinates, speed information
G-Sensor	Internal G-Sensor	Supports 3 Axis Motion Detection with user set ranges, for X, Y and Z coordinates
Software	PC Playback	A/V, GPS, Mapview, Speed, G-Sensor, etc. files available for playback on PC. Limited playback is also available on MDVR
Software Upgrade	IVMS	Wireless (require Wi-Fi or cellular Option) real-time A/V monitoring, GPS, alarms, etc.
	Local or Remotely	Upgrade through the front USB3.0 or remotely via IVMS platform
Voltage Input	+24V~+36V	24~36VDC Please check operational voltage of vehicle prior to the installation of the MDVR and its accessories to prevent possible damage
Voltage Output	12V	12V(+/-0.2V),Max 3A
ACC Detection	≤4V	Power-off
	≥6V	Power-on
Video Input Resistance	75Ω	75Ω
Video Output Voltage	2Vp-p	2VP-P CVBS output analog signal, screen input requires 75Ω resistance
I / O Port	<1V	Low voltage trigger
	>5V	High voltage trigger
Operational Temperature	-40℃ ~ 80℃	Install in well ventilated area, protected from moisture, heat, dust and vibration
Dimensions	203x208x93.5mm	



Order Model	JH16-8HD-NNN	JH16-8HD-GNN	JH16-8HD-GNW	JH16-8HD-GFN	JH16-8HD-GFW
Description	N/A	GPS	GPS Wi-Fi 5.8G	GPS 4G	GPS 4G Wi-Fi 5.8G

\*Images and specs may vary from products, please contact our sales for updated information.

# AI DASH CAM

up to 3 - 4 channels  
support ADAS,DSM,Face Recognition optional



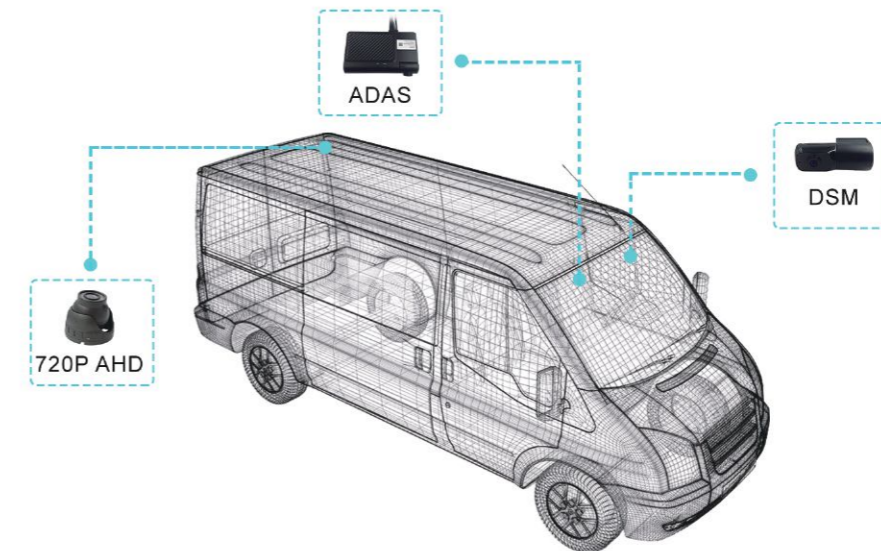
- H.265 DASH CAM
- Support 3 channels AHD ( 1x 1080P + 2x720P )
- Support 4 channels ( 1x 1080P AHD + 2x720P AHD + 1x 1080P IPC)
- Dual TF cards video storage, up to 256 GB each
- ADAS & DSM & Face recognition(optional)
- With 6 axis Gyroscope (G-Sensor)
- Emergency alarm button

## Order Kits 1



2 channels solution

## Order Kits 2



3 channels solution

# JH4AN-HD

Support H.265 / H.264  
HDD Ai Moblie DVR, 4+1 CH 1080P

- Up to 5 channels A/V recording, 4 x 1080P AHD + 1 x 1080P IPC
- Accept HDD / SSD storage, and 1 SD card (up to 512GB) for backup (at 4G / Wi-Fi model option)
- Support AI function ADAS / DSM / BSD optional
- Anti-Shock and Anti-Vibration MIL-STD-810G certified
- Hard drive auto-heating startup in freezing weather
- Built-in an integrated 3-axis G-SENSOR + 3-axis gyroscope (a total of 6 axes), to detect and trigger the alarm of rapid acceleration, harsh braking, crash and sharp cornering.
- Operating temperature -40°C ~ +80°C
- On board UPS 8 seconds delay power-off for data protection
- 8V~36V wide voltage power supply



## Specification

System	Language Operation Interface Password Security	English / Chinese Graphical User Interface (OSD menu) 2 Levels: Administrator & User
AI Algorithm	DSM (JA-MC921)	Yawning Detection, Eyes Closing Detection, Smoking Detection Making Phone Calls Detection, Distraction Detection, Driver Absence Detection Camera Blocked Detection, Eyes Blocked Detection
	ADAS (JA-MC920)	Lane Departure Warning, Safe Distance Warning Froward Collision Warning, Pedestrian Collision Warning
	BSD (Optional)	Support Blind Spot Detection Cameras (2 channels)
Video	Video Input	Option1: Support 2 channels 1080P AHD (DSM & ADAS) + 2 channels 1080P AHD / 960P AHD / 720P AHD / 960H / D1 / CIF + 1 channel IPC (720P / 1080P) Video input Option2: 4 channels 1080P AHD / 960P AHD / 720P AHD / 960H / D1 / CIF + 1 channel IPC (720P / 1080P) Video input
	Video Output	3 Channels (Front Panel 3.5mm Jack, Rear Panel on 24pin I/O Port & VGA 1080P)
	Video Display	Single picture, 1~5 pictures
	Signal System	PAL / NTSC (PAL@100 frame 1080P/sec; NTSC@120 frame 1080P/sec)
Audio	Image Compression	H.265 / H.264 Main profile
	Audio Input	4 Channels
	Audio Output	2 Channels (Front Panel 3.5mm Jack, Rear Panel on 24pin I/O Port)
	Record Format	Synchronized A/V recording
Recording & Storage	Image Resolution	CIF / HD1 / D1 / 960H / 720P / 1080P optional
	Video Bit Rate	CIF: 1536Kbps ~ 128Kbps, HD1/D1: 2048Kbps ~ 400Kbps, 960H: 2048Kbps ~ 400Kbps, 720P:4096Kbps ~ 400Kbps 1080P:4096Kbps ~ 400Kbps Select from 8 Levels of Video Image Quality ranging from 1 (Highest) to 8 (Lowest)
	Audio Bit Rate	40Kbps
Alarm	Storage	Up to 4TB HDD/SSD and 1 SD card for backup (at 3G/4G/WIFI model option)
	Alarm Input Alarm Output	8 Channels, Select Trigger for either less than 1VDC or greater than 5VDC 1 Channel, 12V output
Communication Ports	RS485	1 Port for PTZ control or Data Device usage
	RS232	2 Ports for communication or Data usage
	RJ45 Network	1 Port of RJ45(100M Ethernet port), For connection to an IP camera with maximum of 1080P
	Speed	1 Channel (Optional, shared with the port IO /IN 8)
	CAN	1 Channel (Optional, shared with the port IO /IN 6/7)
Wireless Communication*	USB	2 ports. The front one is USB 2.0 to download video files & upgrade firmware; and plug in a mouse for setup The rear panelone is USB 2.0 for optional.
	3G/4G* Wi-Fi*	Supported Internal Wi-Fi 802.11 b/g/n/ac optional
GPS*	Internal Standard GPS*	Internal GPS module. Real-time geographic coordinates, speed information
G-Sensor + Gyroscope	Internal G-Sensor + Gyroscope	Support an integrated 3 axis accelerometer (G-Sensor) and 3 axis gyroscope, to detect crash, harsh breaking, acceleration and cornering.
Software	PC Playback	A/V, GPS, Mapview, Speed, G-Sensor, etc. files available for playback on PC. Limited playback is also available on MDVR
	IVMS	Wireless (require Wi-Fi or cellular Option) real-time A/V monitoring, GPS, alarms, etc.
Software Upgrade	Local or Remotely	Upgrade through the front USB2.0 or remotely via IVMS platform
Voltage Input	+8 ~ +36V	8 ~ 36VDC Please check operational voltage of vehicle prior to the installation of the MDVR and its accessories to prevent possible damage
Voltage Output	12V	12V (+/-0.2V), Max 3A
ACC Detection	≤4V ≥6V	Power-off Power-on
Video Input Resistance	75Ω	75Ω
Video Output Voltage	2Vp-p	2VP-P CVBS output analog signal, screen input requires 75Ω resistance
I / O Port	<1V	Low voltage trigger
	>5V	High voltage trigger
Operational Temperature	-40 C ~ 80 C	Install in well ventilated area, protected from moisture, heat, dust and vibration
Dimensions	192x184x61mm	Including Security Cover 248x184x61mm



Order Model	JH4AN-HD-GNN	JH4AN-HD-GNW	JH4AN-HD-GFN	JH4AN-HD-GFW
Description	GPS	GPS Wi-Fi 5.8G	GPS 4G	GPS 4G Wi-Fi 5.8G

\*Images and specs may vary from products, please contact our sales for updated information.

# JH8AN-HD

Support H.265 / H.264  
HDD Ai Moblie DVR, 8+1 CH 1080P

- Up to 9 channels A/V recording, 8 x 1080P AHD + 1 x 1080P IPC
- Accept HDD / SSD storage, and 1 SD card (up to 512GB) for backup (at 4G / Wi-Fi model option)
- Support AI function ADAS / DSM / BSD optional
- Anti-Shock and Anti-Vibration MIL-STD-810G certified
- Hard drive auto-heating startup in freezing weather
- Built-in an integrated 3-axis G-SENSOR + 3-axis gyroscope (a total of 6 axes), to detect and trigger the alarm of rapid acceleration, harsh braking, crash and sharp cornering.
- Operating temperature - 40°C ~ + 80°C
- On board UPS 8 seconds delay power-off for data protection
- 8V~36V wide voltage power supply



## Specification

System	Language Operation Interface Password Security	English / Chinese Graphical User Interface (OSD menu) 2 Levels: Administrator & User
AI Algorithm	DSM (JA-MC921)	Yawning Detection , Eyes Closing Detection , Smoking Detection Making Phone Calls Detection , Distraction Detection , Driver Absence Detection Camera Blocked Detection , Eyes Blocked Detection
	ADAS (JA-MC920)	Lane Departure Warning , Safe Distance Warning Froward Collision Warning , Pedestrian Collision Warning
	BSD (Optional)	Support Blind Spot Detection Cameras (2 channels)
Video	Video Input	Option1: Support 2 channels 1080P AHD (DSM & ADAS) + 6 channels 1080P AHD / 960P AHD / 720P AHD / 960H / D1 / CIF + 1 channel IPC (720P / 1080P) Video input Option2: 8 channels 1080P AHD / 960P AHD / 720P AHD / 960H / D1 / CIF + 1 channel IPC (720P / 1080P) Video input Note: (8x15 fps) 8-CH 1080P AHD + 1-CH 720P/1080P IPC Video input (8x15 fps) 8-CH 1080P AHD camera Video input
	Video Output	3 Channels (Front Panel 3.5mm Jack, Rear Panel on 24pin I/O Port & VGA 1080P)
	Video Display Signal System Image Compression	Single picture, 1~9 pictures PAL / NTSC ( PAL@120 frame 1080P/sec; NTSC@120 frame 1080P/sec ) H.265 /H.264 Main profile
Audio	Audio Input	8 Channels
	Audio Output Record Format	2 Channels (Front Panel 3.5mm Jack, Rear Panel on 24pin I/O Port) Synchronized A/V recording
Recording & Storage	Image Resolution	CIF / HD1 / D1 / 960H / 720P / 1080P optional
	Video Bit Rate	CIF: 1536Kbps ~ 128Kbps, HD1/D1: 2048Kbps ~ 400Kbps, 960H: 2048Kbps ~ 400Kbps, 720P:4096Kbps ~ 400Kbps 1080P:4096Kbps ~ 400Kbps Select from 8 Levels of Video Image Quality ranging from 1 (Highest) to 8 (Lowest)
	Audio Bit Rate Storage	40Kbps Up to 4TB HDD/SSD and 1 SD card for backup (at 3G/4G/WIFI model option)
Alarm	Alarm Input Alarm Output	8 Channels, Select Trigger for either less than 1VDC or greater than 5VDC 1 Channel, 12V output
	RS485 RS232	1 Port for PTZ control or Data Device usage 2 Ports for communication or Data usage
Communication Ports	RJ45 Network	1 Port of RJ45(100M Ethernet port), For connection to an IP camera with maximum of 1080P
	Speed CAN	1 Channel (Optional, shared with the port IO /IN 8) 1 Channel (Optional, shared with the port IO /IN 6/7)
	USB	2 ports. The front one is USB 2.0 to download video files & upgrade firmware; and plug in a mouse for setup The rear panelne is USB 2.0 for optional.
Wireless Communication*	3G/4G* Wi-Fi*	Supported Internal Wi-Fi 802.11 b/g/n/ac optional
GPS*	Internal Standard GPS*	Internal GPS module. Real-time geographic coordinates, speed information
G-Sensor + Gyroscope	Internal G-Sensor + Gyroscope	Support an integrated 3 axis accelerometer (G-Sensor) and 3 axis gyroscope, to detect crash, harsh breaking, acceleration and cornering.
Software	PC Playback	A/V, GPS, Mapview, Speed, G-Sensor, etc. files available for playback on PC.
	IVMS	Limited playback is also available on MDVR Wireless (require Wi-Fi or cellular Option) real-time A/V monitoring, GPS, alarms, etc.
Software Upgrade	Local or Remotely	Upgrade through the front USB3.0 or remotely via IVMS platform
Voltage Input	+8 ~ +36V	8 ~ 36VDC Please check operational voltage of vehicle prior to the installation of the MDVR and its accessories to prevent possible damage
Voltage Output	12V	12V (+/-0.2V) , Max 3A
ACC Detection	≤4V	Power-off
Video Input Resistance	≥6V	Power-on
Video Output Voltage	75Ω	75Ω
I / O Port	2Vp-p	2VP-P CVBS output analog signal, screen input requires 75Ω resistance
Operational Temperature	<1V	Low voltage trigger
	>5V	High voltage trigger
Dimensions	-40 C ~ 80 C	Install in well ventilated area, protected from moisture, heat, dust and vibration
	192x184x61mm	Including Security Cover 248x184x61mm

JH8AN-HD



JH8AN-HD



Order Model	JH8AN-HD-GNN	JH8AN-HD-GNW	JH8AN-HD-GFN	JH8AN-HD-GFW
Description	GPS	GPS Wi-Fi 5.8G	GPS 4G	GPS 4G Wi-Fi 5.8G

\*Images and specs may vary from products, please contact our sales for updated information.

# JH4-HYBRID

4 + 4 CH Hard Disk Mobile NVR

- 4 x IPC ( 1080P / 720P ) + 4 x 720P AHD / 960H / D1 / HD1 / CIF
- Built-in Switch 4 x POE (12V) Ethernet Ports
- HDMI Video Output Port
- Accept HDD / SSD storage, and 1 SD card (up to 512GB) for backup (at 4G / Wi-Fi model option)
- Internal G-sensor, GPS, 4G, Wi-Fi 5.8G
- Anti-Shock and Anti-Vibration MIL-STD-810G certified
- Hard drive auto-heating startup in freezing weather
- Operating temperature -40°C ~ +80°C
- On board UPS 8 seconds delay power-off for data protection
- 8V~36V wide voltage power supply

## Specification



System	Language	English / Chinese
	Operation Interface	Graphical User Interface (OSD menu)
	Password Security	2 Levels: Administrator & User
Video	Video Input	Supports 4 channels 1080P AHD camera Video input Supports 4 channels CIF/HD1/D1/960H/720P AHD camera Video input Supports 4 channels 1080P/720P IP camera Video input Supports 4-CH 1080P/720P IPC + 4-CH 720P AHD/960H/D1/CIF Video input
	Video Output	1 each HDMI (max, 1080P), 2 CVBS (Analog): 1 each 3.5mm Jack on Front Panel and one connection on the 24 pin I/O port
	Video Display	Single picture, 1~8 pictures
	Signal System	PAL / NTSC ( PAL@200 frame 1080P/sec; NTSC@240 frame 1080P/sec )
	Image Compression	H.264 Main profile
Audio	Audio Input	4 Channels
	Audio Output	2 Channels (Front Panel 3.5mm Jack 1 in the 24pin connector)
	Record Format	Synchronized A/V recording
Recording & Storage	Image Resolution	CIF / HD1 / D1 / 960H / 720P / 1080P options
	Video Coding	ISO14496-10 Industry Standard
	Video Bit Rate	CIF: 1536Kbps ~ 128Kbps, HD1/D1: 2048Kbps ~ 400Kbps, 960H: 2048Kbps ~ 400Kbps, 720P/1080P:4096Kbps ~ 400Kbps Select from 8 Levels of Video Image Quality ranging from 1(Highest) to 8(Lowest)
	Audio Bit Rate	40Kbps
	Storage	Up to 2TB HDD/SSD and 1 SD card for backup (at 3G/4G/WIFI model option)
Alarm	Alarm Input	8 Channels, Select Trigger for either less than 1VDC or greater than 5VDC
	Alarm Output	1 Channel, 12V output
Communication Ports	RS485	1 Port for PTZ control or Data Device usage
	RS232	2 Port for communication or data usage
	RJ45 Network	4 Ports of RJ45, For connection to an IP camera with maximum of 1080P
	USB	2 Ports of USB 2.0, the front is used to export record file. The rear panel is used to mirror
Wireless Communication	3G	3G (HSPA / HSDPA / WCDMA / EVDO / TD-SCDMA) optional Internal module
	4G	4G (TDD-LTE / FDD-LTE) optional module to match local cellular carrier
	Wi-Fi	Internal Wi-Fi 802.11b/g/n ( 2.4 / 5.8 Ghz) optional
GPS	Int'l Standard GPS	Internal GPS module, Real-time geographic coordinates, speed information
G-Sensor	Internal G-Sensor	Supports 3 Axis Motion Detection with user set ranges, for X, Y and Z coordinates
Software	PC Playback	A/V, GPS, Mapview, Speed, G-Sensor, etc. files available for playback on PC. Limited playback is also available on MDVR
Software	IVMS	Wireless (require Wi-Fi or cellular Option) real-time A/V monitoring, GPS, alarms, etc.
Software Upgrade	Local or Remotely	Upgrade through the front USB2.0 or remotely via IVMS platform
Voltage Input	+8~+36V	8~36VDC Please check operational voltage of vehicle prior to the installation of the MDVR and its accessories to prevent possible damage
Voltage Output	12V	12V (+/-0.2V) · Max 3A
ACC Detection	≤4V	Power Off
	≥6V	Power On
Video Input Resistance	75 Ω	75 Ω
Video Output Voltage	2Vp-p	2VP-P CVBS output analog signal, screen input requires 75 Ω resistance
I / O port	<1V	Low voltage trigger
	>5V	High voltage trigger
Operation Temperature	-40℃~80℃	Install in well ventilated area, protected from moisture, heat, dust and vibration
Dimensions	192x184x61mm	Including Security Cover 248x184x61mm

Order Model	JH4-HYBRID-NNN	JH4-HYBRID-GNN	JH4-HYBRID-GNW	JH4-HYBRID-GFN	JH4-HYBRID-GFW
Description	N/A	GPS	GPS Wi-Fi 5.8G	GPS 4G	GPS 4G Wi-Fi 5.8G

\*Images and specs may vary from products, please contact our sales for updated information.

# JH8-HYBRID JH8-NVR

8 Channels IPC Hard Disk Mobile NVR

- 8 x 1080P IP camera Video input
- VGA Video Output ( JH8 - NVR )
- HDMI Video Output ( JH8 - HYBRID )
- Accept HDD / SSD storage, and 1 SD card (up to 512GB) for backup(at 4G / Wi-Fi model option)
- Internal G-sensor, GPS, 4G, Wi-Fi 5.8G
- Anti-Shock and Anti-Vibration MIL-STD-810G certified
- Hard drive auto-heating startup in freezing weather
- On board UPS 8 seconds delay power-off for data protection
- Operating temperature -40°C ~ +80°C
- 8V~36V wide voltage power supply



## Specification

System	Language	English / Chinese
	Operation Interface	Graphical User Interface (OSD menu)
	Password Security	2 Levels: Administrator or User
Video	Video Input	Supports 8 channels 1080P IP camera Video input
	Video Output	3 Channels (Front Panel 3.5mm Jack, Rear Panel on 24pin I/O Port & VGA 1024P or HDMI 1080P)
	Video Display	Single picture, 8 pictures
	Signal System	PAL / NTSC ( PAL@200 frame 1080P/sec; NTSC@240 frame 1080P/sec )
	Image Compression	H.264 Main profile
Audio	Audio Input	8 Channels
	Audio Output	2 Channels (Front Panel 3.5mm Jack, 1 in the 24pin connector)
	Record Format	Synchronized A/V recording
Recording & Storage	Image Resolution	CIF / HD1 / D1 / 960H / 720P / 1080P optional
	Video Coding	ISO14496-10 Industry Standard
	Video Bit Rate	CIF: 1536Kbps ~ 128Kbps, HD1/D1: 2048Kbps ~ 400Kbps, 960H: 2048Kbps ~ 400Kbps, 720P:4096Kbps ~ 400Kbps 1080P:4096Kbps ~ 400Kbps Select from 8 Levels of Video Image Quality ranging from 1(Highest) to 8(Lowest)
	Audio Bit Rate	40Kbps
Alarm	Storage	Up to 2TB HDD/SSD and 1 SD card for backup (at 3G/4G/WiFi model option)
	Alarm Input	8 Channels, Select Trigger for either less than 1VDC or greater than 5VDC
	Alarm Output	1 Channel, 12V output
Communication Ports	RS485	1 Port for PTZ control or Data Device usage
	RS232	2 Port for communication or data usage
	RJ45 Network	4 Ports of RJ45, For connection to an IP camera with maximum of 1080P(JH8-BYBRID)
	USB	1 Ports of USB 2.0, is used to export record file.(2 Ports of USB 2.0, the front is used to export record file.The rear panel is used to mirror--JH8-HYBRID)
Wireless Communication	3G	3G (HSDPA / HSDPA / WCDMA / EVDO / TD-SCDMA) optional Internal module
	4G	4G (TDD-LTE / FDD-LTE) optional module to match local cellular carrier
GPS	Wi-Fi	Internal Wi-Fi 802.11b/g/n ( 2.4 / 5.8 Ghz) optional
G-Sensor	Int'l Standard GPS	Internal GPS module, Real-time geographic coordinates, speed information
Software	Internal G-Sensor	Supports 3 Axis Motion Detection with user set ranges, for X, Y and Z coordinates
Software Upgrade	PC Playback	A/V, GPS, Mapview, Speed, G-Sensor, etc, files available for playback on PC, Limited playback is also available on MNVR
Voltage Input	IVMS	Wireless (require Wi-Fi or cellular Option) real-time A/V monitoring, GPS, alarms, etc.
Voltage Output	Local or Remotely	Upgrade through the front USB2.0 or remotely via IVMS platform
ACC Detection	+8~+36V	8~36VDC Please check operational voltage of vehicle prior to the installation of the MNVR and its accessories to prevent possible damage
Video Input Resistance	12V	12V (+/-0.2V) · Max 3A
Video Output Voltage	≤4V	Power Off
I / O port	≥6V	Power On
Operation Temperature	75 Ω	75 Ω
Dimensions	2Vp-p	2VP-P CVBS output analog signal, screen input requires 75 Ω resistance
	<1V	Low voltage trigger
	>5V	High voltage trigger
	-40℃ ~80℃	Install in well ventilated area, protected from moisture, heat, dust and vibration
	192x184x61mm	Including Security Cover 248x184x61mm

Order Model	JH8-NVR-NNN	JH8-NVR-GNN	JH8-NVR-GNW	JH8-NVR-GFN	JH8-NVR-GFW
Description	N/A	GPS	GPS Wi-Fi 5.8G	GPS 4G	GPS 4G Wi-Fi 5.8G



Order Model	JH4-HYBRID-NNN	JH8-HYBRID-GNN	JH8-HYBRID-GNW	JH8-HYBRID-GFN	JH8-HYBRID-GFW
Description	N/A	GPS	GPS Wi-Fi 5.8G	GPS 4G	GPS 4G Wi-Fi 5.8G

\*Images and specs may vary from products, please contact our sales for updated information.

# JS2AN-HD

Support H.265 / H.264  
Dual SD Cards 4+1 CH 1080P Ai Moblie DVR

- Up to 5 channels A/V recording, 4 x 1080P AHD + 1 x 1080P IPC
- Accept 2 SD cards storage, up to 512GB each
- Support AI function ADAS / DSM / BSD optional
- Support CAN Bus (customized for integration)
- On board UPS 8 seconds delay power-off for data protection
- 8V~36V wide voltage power supply
- Built-in an integrated 3-axis G-SENSOR + 3-axis gyroscope (a total of 6 axes) to detect and trigger the alarm of rapid acceleration, harsh braking, crash and sharp cornering.



## Specification

System	Language Operation Interface Password Security	English / Chinese Graphical User Interface (OSD menu) 2 Levels: Administrator & User
AI Algorithm	DSM (Optional)	Yawning Detection, Eyes Closing Detection, Smoking Detection Making Phone Calls Detection, Distraction Detection, Driver Absence Detection Camera Blocked Detection, Eyes Blocked Detection
	ADAS (Optional)	Lane Departure Warning, Safe Distance Warning Forward Collision Warning, Pedestrian Collision Warning
	BSD (Optional)	Blind Spot Detection
Video	Video Input	Option1: Support 2 channels 1080P AHD (DSM & ADAS) + 2 channels 1080P AHD / 960P AHD / 720P AHD / 960H / D1 / CIF + 1 channel IPC (720P / 1080P) Video input Option2: 4 channels 1080P AHD / 960P AHD / 720P AHD / 960H / D1 / CIF + 1 channel IPC (720P / 1080P) Video input Note: User need Wi-Fi module to calibrate DSM& ADAS
	Video Output Video Display Signal System Image Compression	2 Channels (Front Panel 3.5mm Jack, Rear Panel on 24 pin I/O Port) Single picture, 1~5 pictures PAL / NTSC (PAL@100 frame 1080P/sec; NTSC@120 frame 1080P/sec H.265 / H.264 Main profile
Audio	Audio Input Audio Output Record Format	4 Channels 2 Channels (Front Panel 3.5mm Jack, Rear Panel on 24pin I/O Port) Synchronized A/V recording
Recording & Storage	Image Resolution Video Coding	CIF / HD1 / D1 / 960H / 720P / 1080P optional ISO14496-10 Industry Standard
	Video Bit Rate	CIF: 1536Kbps ~ 128Kbps, HD1/D1: 2048Kbps ~ 400Kbps, 960H: 2048Kbps ~ 400Kbps, 720P: 4096Kbps ~ 400Kbps 1080P: 4096Kbps ~ 400Kbps Select from 8 Levels of Video Image Quality ranging from 1(Highest) to 8(Lowest)
	Audio Bit Rate Storage	40Kbps 2 SD Card Slots, Up to 512GB each, Class 10 or higher
Alarm	Alarm Input Alarm Output	8 Channels, Select Trigger for either less than 1VDC or greater than 5VDC 1 Channel, 12V output
Communication Ports	RS485 RS232 RJ45 Network Speed CAN	1 Port for PTZ control or Data Device usage 2 Ports for communication or Data usage 1 Port of RJ45, For connection to an IP camera with maximum of 1080P 1 Channel (Optional, shared with the port IO /IN 8) 1 Channel (Optional, shared with the port IO /IN 6/7)
Wireless Communication*	3G/4G* Wi-Fi*	Supported Internal Wi-Fi 802.11 b/g/n/ac optional
GPS*	Internal Standard GPS*	Internal GPS module. Real-time geographic coordinates, speed information
G-Sensor	Internal G-Sensor	Support 6 axis Gyroscope (G-Sensor), support crash detection, and other detection like harsh braking, acceleration and cornering
Software	PC Playback IVMS	A/V, GPS, Mapview, Speed, G-Sensor, etc. files available for playback on PC. Limited playback is also available on MDVR Wireless (require Wi-Fi or cellular Option) real-time A/V monitoring, GPS, alarms, etc.
Software Upgrade	Local or Remotely	Upgrade through SD card or remotely via IVMS platform
Voltage Input	+8 ~ +36V	8 ~ 36VDC Please check operational voltage of vehicle prior to the installation of the MDVR and its accessories to prevent possible damage
Voltage Output	12V	12V (+/-0.2V), Max 3A
ACC Detection	≤4V ≥6V	Power-off Power-on
Video Input Resistance	75Ω	75Ω
Video Output Voltage	2Vp-p	2VP-P CVBS output analog signal, screen input requires 75Ω resistance
I / O Port	<1V >5V	Low voltage trigger High voltage trigger
Operational Temperature	-25℃ ~ 75℃	Install in well ventilated area, protected from moisture, heat, dust and vibration
Dimensions	170x142x50mm	Including Security Cover 170x142x50mm

JS2AN-HD		JS2AN-HD		
Order Model	JS2AN-HD-GNN	JS2AN-HD-GNW	JS2AN-HD-GFN	JS2AN-HD-GFW
Description	GPS	GPS Wi-Fi 5.8G	GPS 4G	GPS 4G Wi-Fi 5.8G

\*Images and specs may vary from products, please contact our sales for updated information.

# JS1A

Support H.265 / H.264  
Single SD Card 4+1 CH 1080P Moblie DVR

- Up to 5 channels A/V recording, 4 x 1080P AHD + 1 x 1080P IPC
- Single SD card storage, up to 512GB
- 8V~36V wide voltage power supply
- Built-in an integrated 3-axis G-SENSOR + 3-axis gyroscope (a total of 6 axes) to detect and trigger the alarm of rapid acceleration, harsh braking, crash and sharp cornering
- Built-in GPS, with optional either 4G or Wi-Fi



## Specification

System	Language Operation Interface Password Security	English / Chinese Graphical User Interface ( OSD menu ) 2 Levels: Administrator & User
Video	Video Input	Support 4 channels 1080P AHD / 960P AHD / 720P AHD / 960H + 1 channel IPC (720P /1080P) Video input Note: (4x15 fps) 4-CH 1080P AHD + 1-CH 720P/1080P IPC Video input (4x15 fps) 4-CH 1080P AHD camera Video input
	Video Output	1 Channels (Rear Panel on 12 pin I/O&AV-OUT Port )
	Video Display	Single picture, 1~5 pictures
	Signal System	PAL / NTSC ( PAL@100 frame 720P/sec; NTSC@120 frame 720P/sec )
	Image Compression	H.265/H.264 Main profile
Audio	Audio Input	4 Channels
	Audio Output	1 Channels ( Rear Panel on 12 pin I/O&AV-OUT Port )
	Record Format	Synchronized A/V recording
Recording & Storage	Image Resolution	CIF / HD1 / D1 / 960H / 720P/1080P optional
	Video Coding	ISO14496-10 Industry Standard
	Video Bit Rate	CIF: 1536Kbps ~ 128Kbps,HD1/D1: 2048Kbps ~ 400Kbps, 9960H: 2048Kbps ~ 400Kbps,720P:4096Kbps ~ 400Kbps,1080P:4096Kbps ~ 400Kbps Select from 8 Levels of Video Image Quality ranging from 1(Highest) to 8(Lowest)
	Audio Bit Rate	128Kbps
	Storage	1 SD Card Slot, Up to 256GB , Class 10 or higher
Alarm	Alarm Input Alarm Output RS232	4 Channels, Select trigger for either less than 1VDC or greater than 5VDC 1 Chaannel, 12V output 1 Port for communication or data usage
Communication Ports	RJ45 Network	1 Port of RJ45(100M Ethernet port). For connection to an IP camera with maximun of 1080P
	USB	1 Port for USB 2.0, download video files & upgrade firmware
Wireless Communication*	3G/4G*	Supported (Choose either 4G or WIFI)
	Wi-Fi*	Internal Wi-Fi 802.11b/g/n optional (Choose either 4G or WIFI)
GPS*	Internal Standard GPS*	Internal GPS module. Real-time geographic coordinates, speed information
G-Sensor*	Internal G-Sensor *	Support 6 axis Gyroscope (G-Sensor), support crash detection, and other detection like harsh breaking, acceleration and cornering
Software	PC Playback	A/V, GPS, Mapview, Speed, G-Sensor, etc. files available for playback on PC. Limited playback is also available on MDVR
	IVMS	Wireless (requires Wi-Fi or cellular Option) real-time A/V monitoring, GPS, alarms, etc.
Software Upgrade	Local or Remotely	Upgrade through SD card or remotely via IVMS platform
Voltage Input	+8 ~ +36V	8 ~ 36VDC Please check operational voltage of vehicle prior to the installation of the MDVR and its accessories to prevent possible damage.
Voltage Output	12V	12V (+/-0.2V) , Max 3A
ACC Detection	<8.5V >9V	Power-off Power-on
Video Input Resistance	75Ω	75Ω
Video Output Voltage	2Vp-p	2VP-P CVBS output analog signal, screen input requires 75Ω resistance
I / O Port	<1V >5V	Low voltage trigger High voltage trigger
Operational Temperature	-25℃ ~ 75℃	Install in well ventilated area, protected from moisture, heat, dust and vibration
Dimensions	136*119.2*35.6mm	with mounting brackets 160*119.2*35.6mm



JS1A



JS1A

Order Model	JS1A-GNN	JS1A-GNW	JS1A-GFN
Description	GPS	GPS Wi-Fi 2.4G	GPS 4G

\*Images and specs may vary from products, please contact our sales for updated information.

# JT1

1080P Android Touch Screen DVR for Taxi



## Taxi Surveillance Solution

This powerful touch screen is perfect for taxi surveillance and fleet management. It's running on Android system, including lots of functions such as real-time video / recording, GPS tracking, network communication, on-board navigation, ADAS/DSM analysis, Face recognition, message notification, telephone, order list, payment record, etc. It is able to integrate with other accessories such as fare meter, LED advertisement panel, POS machine, driver panic button, service evaluator, Status LED displayer, speaker for extended functions.

## Specification

Device	Operation System	Android 7.1
	Cores	8 Core ARM Cortex-A7 Processor
	CPU Frequency	2.0G
	GPU	Adreno 506
	RAM Capacity	2GB
Display	ROM Capacity	16GB
	Storage Slot	1 SD Card slot, up to 256 GB
	Battery	Optional, support external battery
	Size	7 inch
	Screen	Touch Screen
Video	Resolution	800×480
	Contrast	500
	Brightness	450cd/m²
	Video Input	Regular camera connection: A. Support 2 channels 720P AHD cameras (standard) B. Support 2 channels 720P AHD cams + 2 channels 720P IP cams (customized) With AI active safety functionality (customized) : A. Support 1 ADAS cam + 1 DSM cam + 1 channel 720P AHD cam B. Support 1 ADAS cam + 1 DSM cam + 2 channels 720P AHD camsvia a switch Note * ADAS cam (Alerts with video footage) * DMS cam ( Alerts without video footage)
Communication Ports	USB	1 port
	Alarm input	4 Channels
	Alarm output	2 Channels
	Output power	3A@12V DC
	Speed pulse	1 channel
Network	RS232	3 channels
	RS485	1 channel
	Speaker/MIC	Internal one speaker and one MIC
	3G/4G	(WCDMA/LTE/FDD/TDD) optional internal module
	Bluetooth	Supports Bluetooth headset / OBD
GPS	Internal WIFI	Supports Wi-Fi hotspot
	Internal GPS	Internal GPS module (Real-time geographic coordinates, speed info)
	G-Sensor	6 axis Gyroscope (G-Sensor), support crash detection, and other detection like harsh breaking, acceleration and cornerin
	RFID card reader	Internal RFID card reader
	Supports Non-contact IC Cards	
Power	Power Consumption	7W
	Voltage Input	DC 9~36V
	Operation Temperature	-25 C ~75 C
	Install in well ventilated area, protected from moisture, heat, dust and vibration	
	Dimension	228*109*36mm (W x H x L)

# JK1C

1080P Smart Touch-Screen Monitor

- 10.1 inch Android Touch Screen, resolution 1024\*600
- Storage with a TF card slot (up to 256GB), used to store files such as music, offline maps, and for device maintenance and upgrade.
- RJ45 port \*1, used for connection with MDVR, to share the network of MDVR
- Support Bluetooth phone, with a built-in speaker and a microphone
- Support Wi-Fi hotspots
- With 6 physical buttons: Power/Sleep; Menu/Return; Navigation Video; Volume up; Volume down.

## Product introduction

The 10.1 inch Android Touch Screen is used for interaction with the Mobile-DVR (MDVR). It supports AHD input, map navigation, vehicle status information display, Bluetooth phone, multimedia player, and other functions. It's suitable for different vehicles, such as trucks, vans, etc.

## Specification

Device	Operation System	Android 10.0
	CPU	Quad-core Cortex™-A53
	GPU	GL31MP2
	RAM	2GB
	ROM	16GB
	Storage	1* TF card (up to 256GB)
Display	Battery	Optional, support external battery
	Size	10.1 inch
	Screen	Touch Screen
Interface	Resolution	1024*600
	USB	1 (Mini USB), used for debugging, OTG
	RJ45	1
	Serial communication & A/V input	8PIN Aviation connector, support 1 channel AHD input
	Audio Input	Built-in 1 channel MIC input
	Audio Output	Built-in 1 channel speaker output
	Video Output	Built-in 1 channel touch screen output
	WIFI	Support Wi-Fi hotspots
	Bluetooth	Support Bluetooth phone
Operation Enviroment	Power Consumption	3W
	Voltage Input	DC12V (power by MDVR)
	Operational temperature / humidity	-25℃ ~75℃ / 20~90% RH
Size	Dimensions	257*168*65 mm
	weight	0.96 KG

# JK12A

Wide 1080P Smart Touchscreen Monitor



- 10.36 inch HD touch screen, resolution 1600\*720
- Storage with a TF card slot, up to 512GB
- Support GPS ,4G, WI-FI (optional)
- Support 5-CH 1080P AHD preview on screen
- Support 4-CH 720P AHD video recording files, or 2-CH 1080P AHD video recording files
- Support DSM and ADAS, with voice warning and flashing icon prompts alert of R-watch function on screen
- Fast display of backup camera without the system start-up completely
- Local footage playback
- Support Bluetooth
- Support F.M Radio, to use the vehicle audio system
- Support U-disk for multimedia playback (music, videos, pictures)
- Support 360 panoramic cameras (customized)
- Support navigation and route planning APPs (customized)
- Support other assistant Apps (customized)
- Support to work with MDVR (customized)

## Product introduction

This 10.36 inch vehicle smart monitor is an Android touch screen that can work with the vehicle MDVR, and support the maximum 5 channels of AHD cameras display on screen. It can realize map navigation, vehicle status information display, camera video display, driver driving record, Bluetooth phone, mobile screen mirroring, multimedia player, FM launch, assistant APPs and other functions. It's suitable for different vehicles, such as trucks, vans, etc.

## Specification

System	Operation System	Android 10.0
	CPU Frequency	Quad-core Cortex™-A53
	GPU	Mali G31 MP2
	CPU frequency	1.5GHz
	RAM Capacity	2GB
	ROM Capacity	16GB
Storage	Storage Slot	1 TF Card slot, up to 512G
Display	Size	10.36 inch
	Resolution	500 cd/m2
	Screen ratio	16:7
	Resolution	1600*720
Video	Video input	Default support 1-CH 720P AHD camera and 1-CH MDVR video input
		Support 4-CH 720P AHD video recording files, or 2-CH 1080P AHD video recording files.
Audio input	MIC	Built -in dual MIC
Audio Output	Speaker	Internal speaker 2W8Ω
	F.M Radio	Support F.M Radio, to use the vehicle audio system
Network	Network	Support to use the shared network from the MDVR via the RJ45
	WIFI	Support
	4G	Support
	Bluetooth	Support
Ports	RS232	2*RS232, one is used to interact with MDVR, and the other is used to connect the peripherals.
	USB	1*USB (Type-C)
	IO-IN	1*IO-IN, Support vehicle reversing signal collection
	GPS	Support
Power	Voltage Input	DC 9-36V
Dimension/ weight	Dimensions	271x133.7x33.5mm
	Weight	0.8KG
Environment	Operating temperature	-25℃~+75℃
	Storage temperature	-40℃~+80℃
	Operating humidity	15% - 95%

Order Model	JH12A-GFN	JH12A-GFW
Description	with GPS 4G	with GPS 4G WI-FI

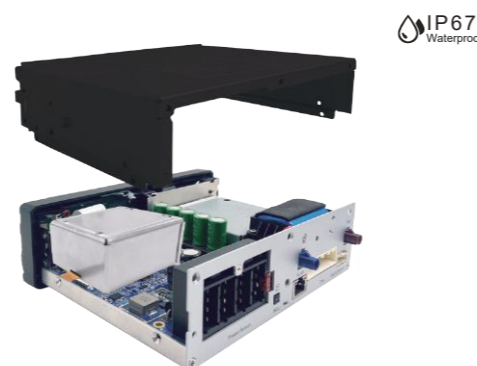
\*Images and specs may vary from products, please contact our sales for updated information.

# Fireproof & Waterproof Data Box



Connects to MDVR, withstand a fire burning at 1100°C for 15 minutes and water under 100 meters. Data could be recorded safely in the fire or flood for vehicle crashes.

## Customized MDVR with Built-in Fireproof Data Box



Fireproof Data Box Storage Optional: 32GB / 64GB / 128GB

Data to be recorded safely in the fire or flood.



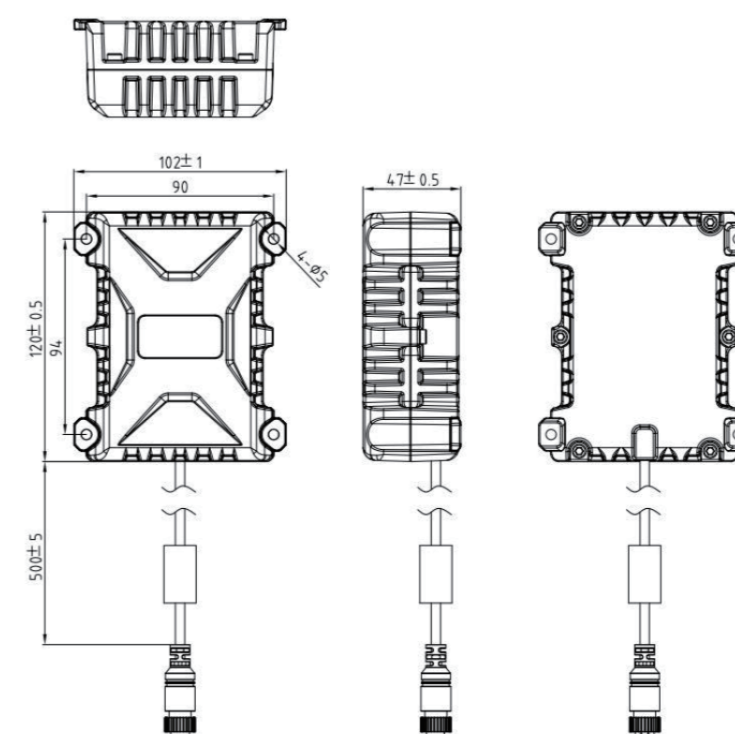
## Features

- Fireproof (up to 1100 °C ) and Waterproof (under 100 meters)
- Reliable industrial grade EMMC memory core
- With high speed 4PIN USB port (M12-5PIN optional)
- To connect with PC, DVR
- Data integrity after accident or disaster

## Specification

Power	Input:5V±5%
Interface	4PIN USB (M12-5PIN optional)
Capacity	32G / 64G / 128G optional
Refractoriness	1100 °C for 15min test
	260 °C for 120min test
Waterproof	100 meters under water 10 ATM pressure
Static Extrusion Force	10kN 5min (all axes)
Dimensions	120x102x47mm
Weight	0.75kg

## Dimensions



# DSM

(Driver Status Monitoring)



JA-MC938



JA-MC921



Eyes Closing



Distraction



Smoking



Making Phone Calls



Yawning



Eyes Blocked



Camera Blocked



Driver Absence

# ADAS

(Advanced Driver-Assistance Systems)

AND MORE...



Safe Distance Warning



Lane Departure Warning



Forward Collision Warning



Pedestrian Collision Warning

# BSD

(Blind Spot Vehicle Discern System)



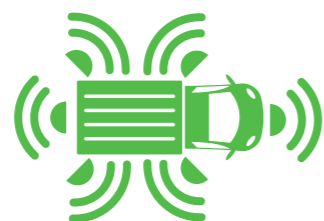
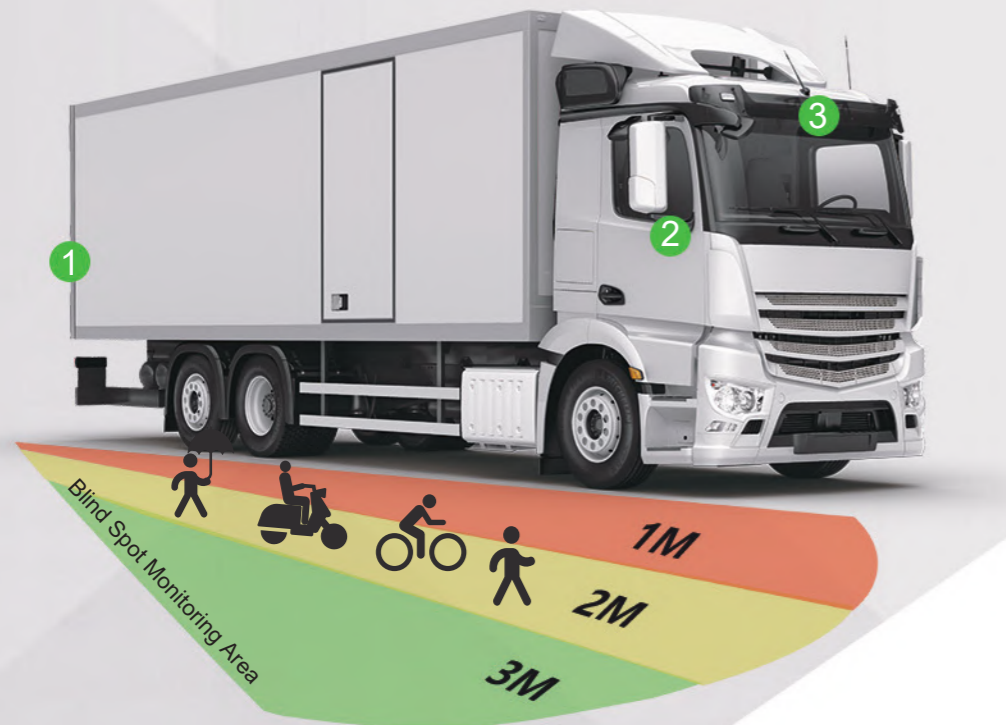
1 JA-MC922



2 JA-MC923



3 JA-MC804



Front Blind Spot  
Right Front Blind Spot  
Left Front Blind Spot

Rear Blind Spot  
Right Rear Blind Spot  
Left Rear Blind Spot

# HOD

(Hands Off Detection)



Play Cell Phone



Off The Steering Wheel



No Seatbelt

# JA-MC818

## EXCLUSIVE DESIGN



Camera

2



1

Camera

- ★ 960P/1080P AHD
- ★ Wide angle 130°view (2.1mm lens)
- ★ IR LED  $\phi 8 \times 10$ pcs, infrared range up to 5 meters
- ★ With Audio



# JA-MC910

## EXCLUSIVE DESIGN



- ★ 2.8/3.6mm lens optional
- ★ Support D-WDR
- ★ It fits any angle of windshield for any type of vehicle
- ★ Anti-glare

JA-MC910



★ ANTI-GLARE ★

Other Camera



VS

# JA-MC912

## EXCLUSIVE DESIGN



- ★ 960P / 1080P AHD
- ★ Support D-WDR
- ★ Laser lights with IR range up to 20 meters
- ★ Side camera with 2.8 mm lens for angle 92°
- ★ Rearview back-up camera with 2.1 mm lens for angle 120°
- ★ Waterproof IP67, double-layer of aluminum alloy designed for double insulation

# JA-MC913

## EXCLUSIVE DESIGN



(120°)



★ WIDE ANGEL 120° ★

- ★ 960P/1080P AHD
- ★ Support D-WDR
- ★ Laser lights with IR range up to 20 meters
- ★ With 2.1 mm lens for angle 120°



JA-MC913



Other camera

# IP Vehicle Camera



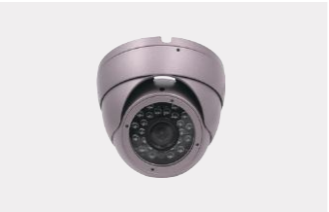
JI-MC019

- ★ 1920\*1080 25 / 30FPS
- ★ 3.6mm lens optional with IR
- ★ High-resolution(2.0 Mega pixel)
- ★ Waterproof IP67
- ★ Support 12V POE power supply (802.3af)



JI-SP225

- ★ 1920\*1080,25 / 30FPS
- ★ 2.8mm lens optional
- ★ Mini Camera
- ★ High-resolution(2.0 Mega pixel)
- ★ Support 12V POE power supply (802.3af)



JI-MC609

- ★ 1920\*1080, 25 / 30FPS
- ★ 2.8/3.6mm lens optional
- ★ High-resolution(2.0 Mega pixel)
- ★ Support IR function,infrared rang up to 10m
- ★ Audio fuction optional
- ★ Support 12V POE power supply(802.3af)



JI-MC510

- ★ 1920\*1080, 25 / 30FPS
- ★ 2.8/3.6mm lens optional
- ★ High-resolution(2.0 Mega pixel)
- ★ Support IR function,infrared rang up to 10m
- ★ Audio fuction optional
- ★ Waterproof IP67 optional
- ★ Support 12V POE power supply(802.3af)

# AHD Vehicle Camera



JA-612B

- ★ 960P/1080P AHD
- ★ 2.8/3.6mm lens optional
- ★ Support IR function, LED range 10m
- ★ Size: ø 59 x 52 mm



JA-MC225

- ★ 960P/1080P AHD
- ★ 2.8 / 3.6 mm lens optional
- ★ Mini Camera
- ★ Size: 49.5 x 47.5mm



JA-MC018

- ★ 960P/1080P AHD
- ★ 2.8/3.6mm lens optional
- ★ Waterproof IP67
- ★ Support IR function, LED range 10m
- ★ Size: 79 x 65 x 38mm



JA-MC609

- ★ 960P/1080P AHD
- ★ 2.8/3.6mm lens
- ★ Support IR function, infrared range up to 10m
- ★ Audio optional
- ★ Size: ø94 x 76 mm



JA-MC019

- ★ 960P/1080P AHD
- ★ 2.8/3.6mm lens optional
- ★ Waterproof IP67
- ★ Support IR function, LED range 30m
- ★ Size: 75 x 95 x 56mm



JA-MC510

- ★ 960P/1080P AHD
- ★ 2.8/3.6mm lens optional
- ★ Audio optional
- ★ Support IR function, LED range 10-15m
- ★ Size: ø 68.8 x 59.2 mm



JA-MC900

- ★ 960P/1080P AHD
- ★ Dual lens, with panic button
- ★ 2.8mm & 2.1mm (wide angle 130°)
- ★ 4pcs Laser IR LED, infrared range 5M
- ★ Size:96x75x48mm



JA-MC920(ADAS)

- ★ 1080P AHD
- ★ 6mm lens
- ★ Aircraft Round Connector
- ★ PAL /NTSC
- ★ Support DC 12V±5%
- ★ Size:105\*68\*43mm



JA-MC921 / 938(D SM )

- ★ 1080P AHD
- ★ 10PIN Aircraft Round Connector
- ★ PAL /NTSC
- ★ IR LED 3535\*2 pcs.
- ★ Support DC 12V±5%
- ★ Support Audio& Speaker
- ★ Size:80\*86.5\*37.5mm



JA-MC804(BSD )

- ★ 1080P AHD camera
- ★ FH8536H + GC2053
- ★ 21mm lens
- ★ Support 12V DC ±10%
- ★ IP67
- ★ Easy side installation
- ★ Low power consumption
- ★ Size: 52\*55\*33mm



JA-MC922(BSD )

- ★ 1080P AHD camera
- ★ FH8550 + 1/2.8"CMOS IMX307
- ★ InfraredLED range25m
- ★ Support 12V DC ±10%
- ★ must workwith the MDVRwithsuch algorithm
- ★ IP67
- ★ Support Side installation (6mm)



Audible and Visual Alarm

- ★ RS485
- ★ 12V
- ★ 5PIN Around aviation connector
- ★ Trigger continuous frequency alarm sound and voice announcement othervoice

# Accessory



## Temperature Sensor

Uses a remotely mounted temperature sensor to monitor the lemperature levels in refrigerator trucks and other temperature sensitive areas within a vehicle.



## Passenger Counter

Passenger counting technology for public vehicles  
Designed for accurately counting individuals entering or leaving public transport vehicles  
1-3 Doors supported



## RFID Reader

Allows the non-contact reading of industry standard RFID Card such as those used in by passengers and drivers of busses,taxis,etc.



## Driver Panic Button

To trigger the alarm in emergency



## Press to Talk

Allows spoken communication between the driver and the Control Center.Communication may be initiated from either Driver or the Comm Center.



## Uninterrupted Power Supply (UPS)

Supports MDVR system contine to work after ACC-off.

\*Images and specs may vary from products, please contact our sales for updated information.

# SOFTWARE

## ICARVISIONS Software Collection



## Server Cluster

IVMS Cluster Server System is consist of login server,streaming server,user server,WiFi automaticdownload server, storage Server and data server, to provide a higher level of availability,reliability, and scalability.It is designed for vehicle surveillance application that has long-running in-memory state and frequently updated data. It ensures that users have constant access to important server-based resources.



The mobile client **iCar View**, this powerful APP includes real-time video, GPS tracking, vehicle movement history playback, speed information, specific video search and playback, snapshot and other functions to monitor your vehicles



iCar View

- GPS Tracking
- Vehicle Movement History Playback
- Speed Information
- Specific Video Search and Playback
- Snapshot
- PTZ Control



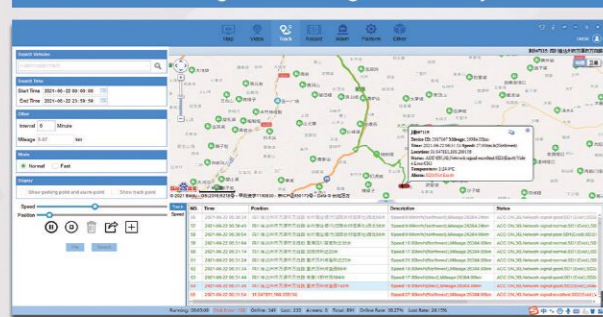
The real time monitoring via phone, you can achieve following features in both Android&iOS



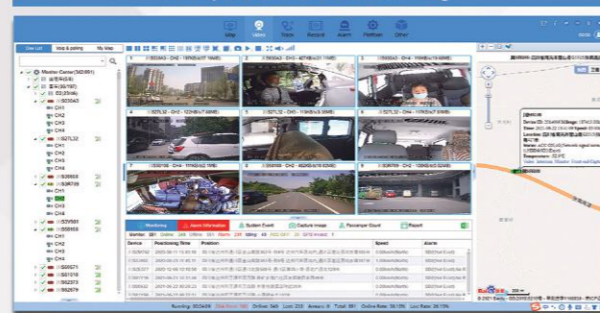
# SOFTWARE

## PC Client

Fleet GPS Tracking And Footage Search By Postcode

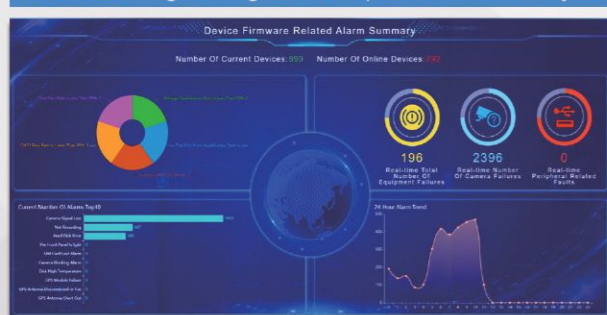


Mutiple Devices Streaming

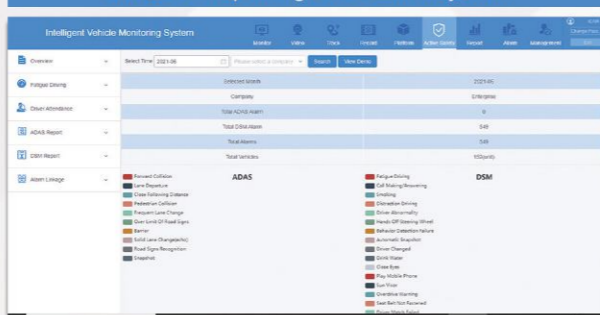


## Web Client

Visualized Page Designed For Specific Vehicle Project



Detailed Reporting And Alarm System

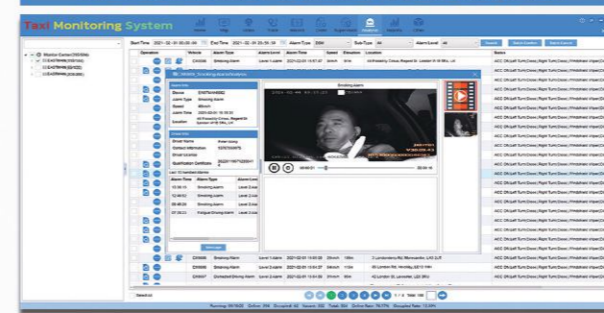


In ICAR, we offer all-in-one professional Client software on various platforms from Windows to Web Browser. And those portals can allow the customer to interact with your fleet remotely including GPS tracking, video streaming, vehicle status, alarm management and more. The exact functionality of the Client portal can vary widely between customer and project requirements.

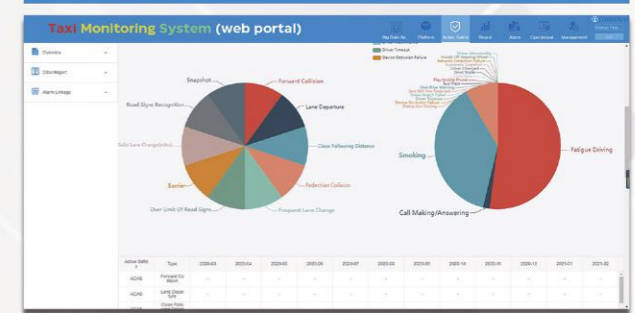
# SOFTWARE

## Taxi

Ai Enabled Driver Behaviors And Safety Alert



Comprehensive Summary For Taxi Fleet

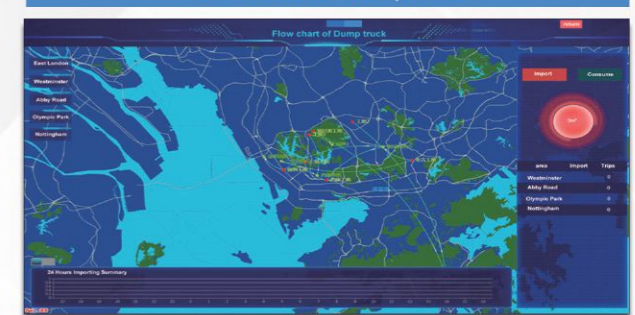


## Construction Truck

Summary Page Featuring Operational Data



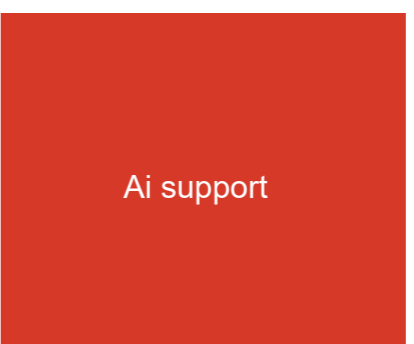
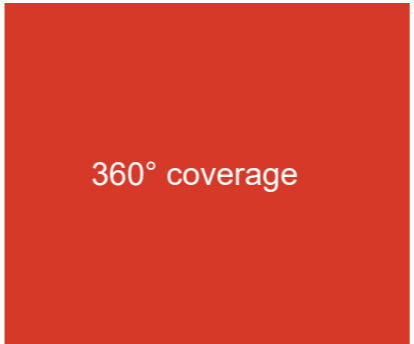
Flow Chart For Dump Truck



Our unique and experienced approach to video telematics and IoT is helping us tackle some of the most complex challenges faced by the fleet, transport, and insurance sectors. Our cloud-based solutions are underpinned by customized platform based on customer's Vehicle and project requirements.

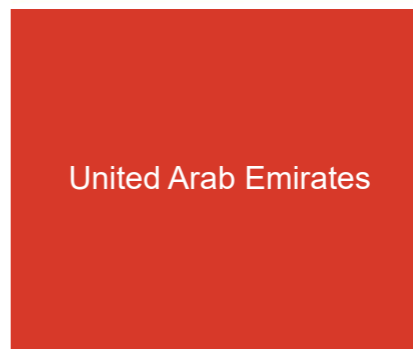


China HGVs  
Vehicles > 140,000 units





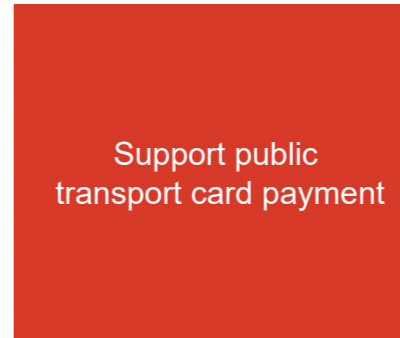
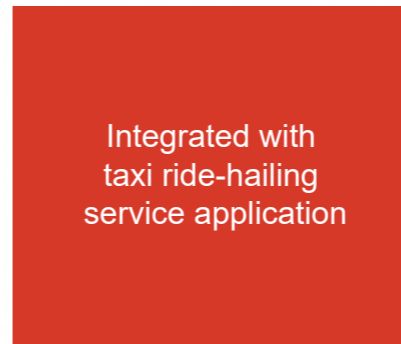
UNITED ARAB EMIRATES  
Taxi Project > 25,000 units





## TURKEY

Taxi Project > 11,000 units





# Nan Jing

Taxi Project > 12,000 units



Integration with  
Taxi System



Fleet Scheduling  
Driver Verification  
Taximeter Report



Payment Options  
Taxi Ride-hailing Service  
Message & Notice





SHAN DONG PROVINCE  
Coach & Dangerous Chemical  
Vehicle > 20,000 units



Support ADAS + DSM system



Detect Driver for Drowsiness,  
Smoking, Making Phone Calls,  
Distraction, etc.

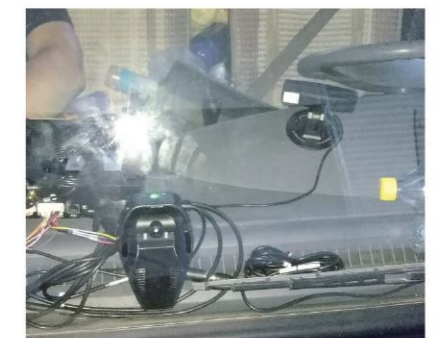




JIANG SU PROVINCE  
Coach & Dangerous Chemical  
Vehicle > 15,000 units



Support ADAS + DSM system



Detect Driver for Drowsiness,  
Smoking, Making Phone Calls,  
Distraction, etc.

# ONE BELT, ONE ROAD

- ● ● The Silk Road Economic Belt
- ● ● The 21st-century Maritime Silk Road

