

Control Panel

1. Connect the device



Note:

MDVR's RS485-A connect to Control Panel's Green wire.

MDVR's RS485-B connect to Control Panel's White wire.

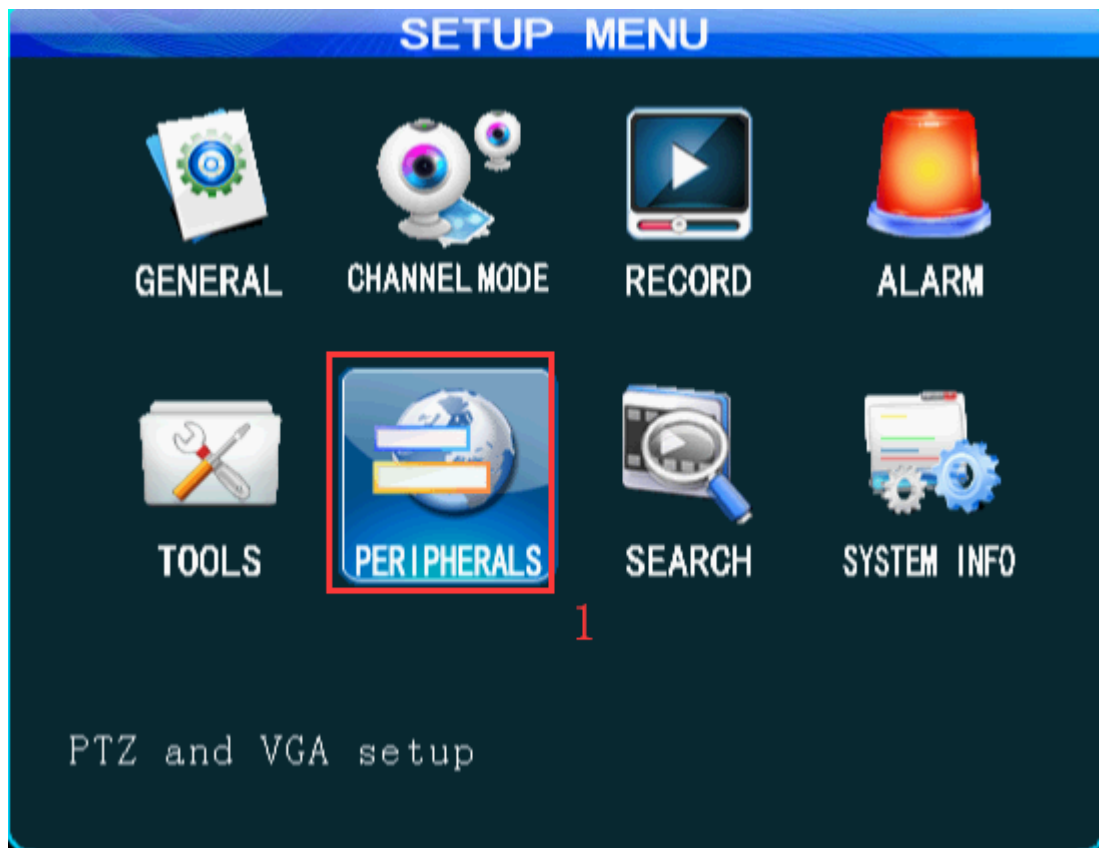
MDVR's GND connect to Control Panel's Black wire.

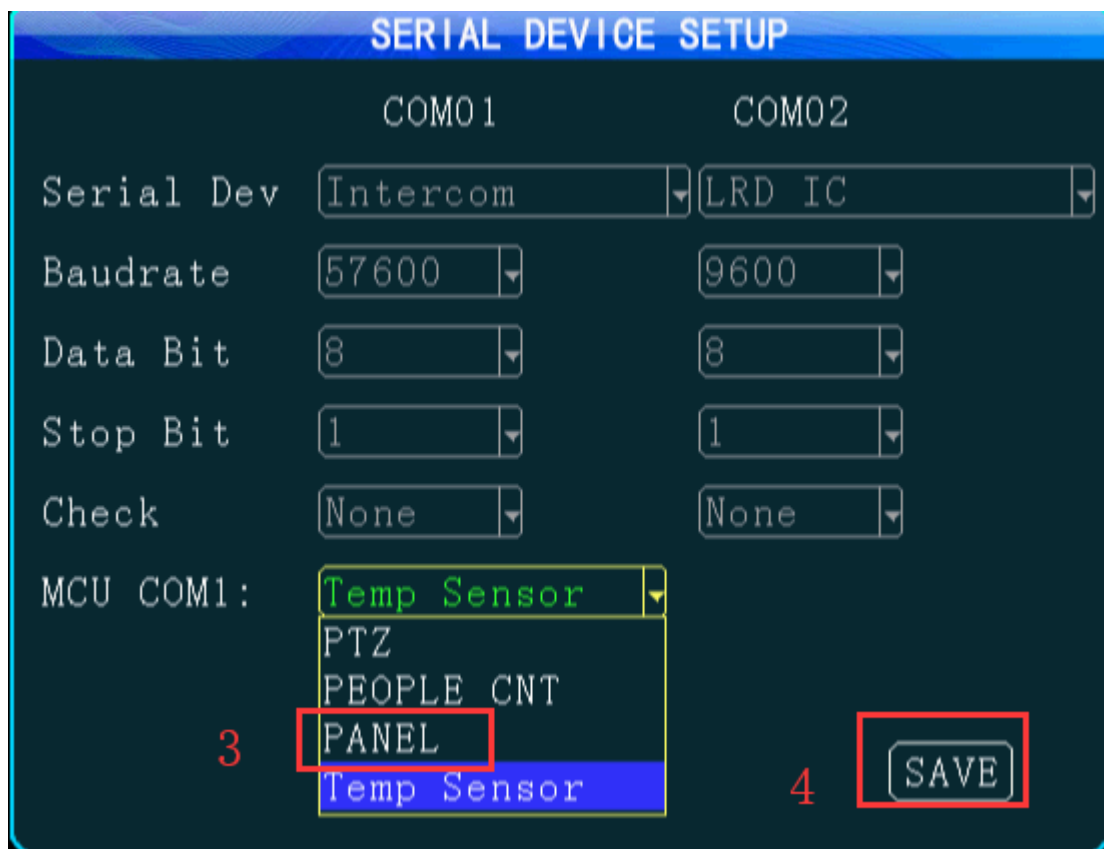
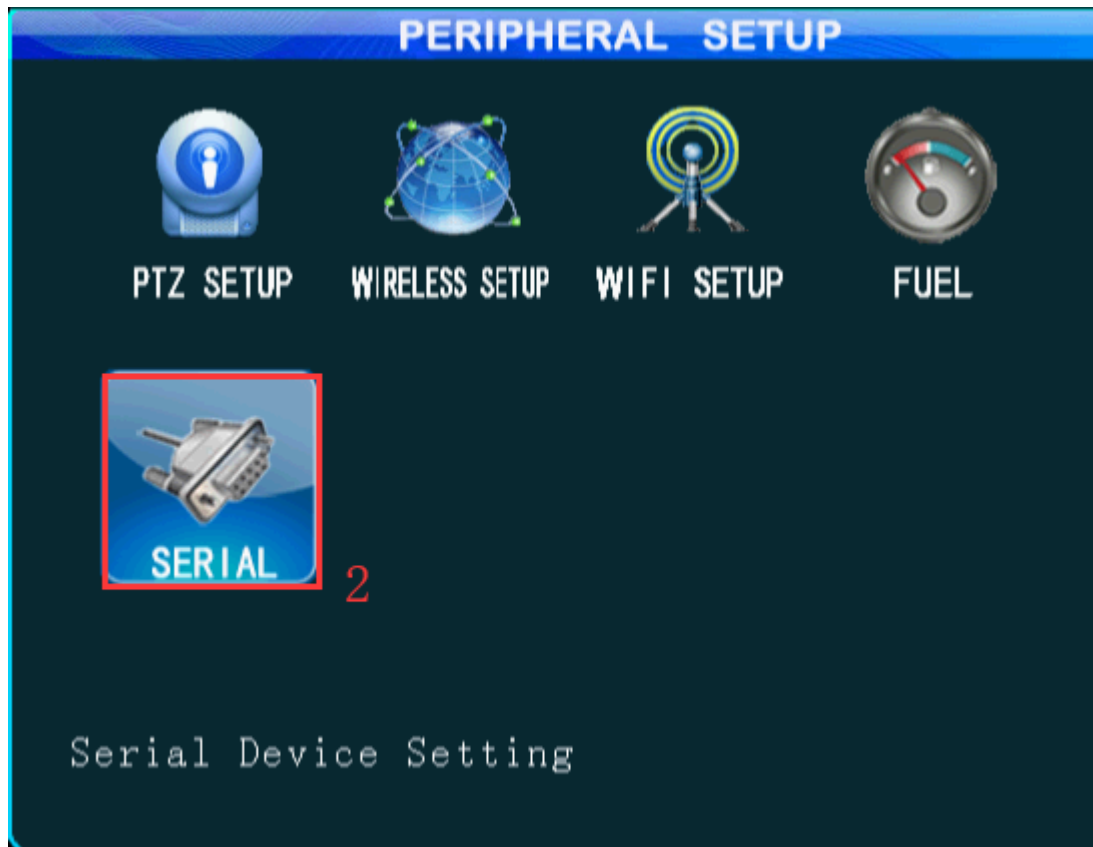
MDVR's 12V-OUT connect to Control Panel's Red wire.

Name	Function
PWR	Power light: long bright after power on.
REC	Record light: long bright when recording.
HDD	Hard disk light: long bright when hard disk existed and flashes when writing and reading data.
ALM	Alarm light: long bright after alarm happen.
V-LOSS	Video loss light: long bright when video loss.
ERR	Error light
IR	IR receiver light

2. Set MDVR

Log in the MDVR and follow the guide.





After set this, the MDVR will restart, then the Control Panel will work.

