

NOTE: ALL STANDARD HD MOBILE DVRs DON'T NEED REGISTRATION ANYMORE

1: PREPARATION

SERVER

In order to achieve telematics functions via 3G or 4G module in Mobile-DVR, such as real-time monitoring and Video Downloading. Users need to build the server, which requires a PC or Server Appliance to do it.

Here is the minimum requirements for Server device / appliance:

OS	Microsoft Windows Server 2008 or Higher
CPU	Intel quad-core Xeon, Frequency of not less than 2.33GHz
Network	1 Gigabit Ethernet
RAM	8G or more
Hard Disk	1TB or more
CD Player	DVR-ROM
Others	Support VGA Display Supports normal keyboard, recommended to use USB Keyboard LED Indicator lights for Computer, HDD and other Activities Status

PS: if you plan to implement thousands units of MDVR in near future, make sure to use a decent PC for Server Appliance.



MOBILE DVR FOR VEHICLE SURVEILLANCE

STATIC IP

For user who want to connect 3G/4G signal to your server, you must use Static IP in your server's network.

Usually, you can acquire or purchase Static IP from your local network supplier or you can choose Cloud server supplier.

2: INSTALL SERVER SOFTWARE

This step can be quite easy, users just need to acquire the last version of the **IVMS SERVER SOFTWARE** from us, which we are happy to help you and our team can even help you install it remotely.

3: CONFIGURATION

MOBILE DVR:

This part will show user how to configure on their Mobile-DVR.

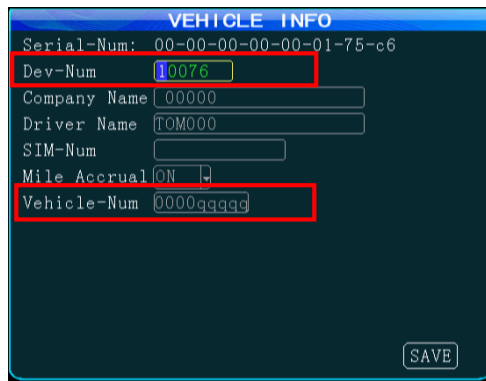


1



2

Step 1: Login Mobile DVR with Password: 888888 via remote control and enter "GENERAL" ---
---"VEHICLE INFO" to set up parameters for vehicle, user needs to type at least five digits of number (for example 11111) at Dev - Num, and user also needs to type the license plate number at Vehicle- Num (For example: platinum R-10001), then SAVE it.



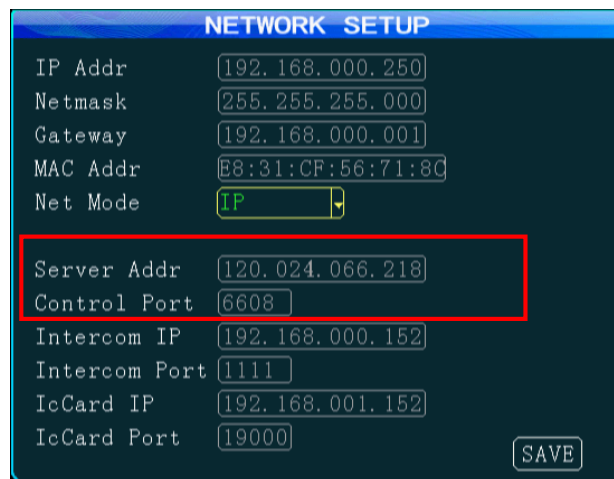
3



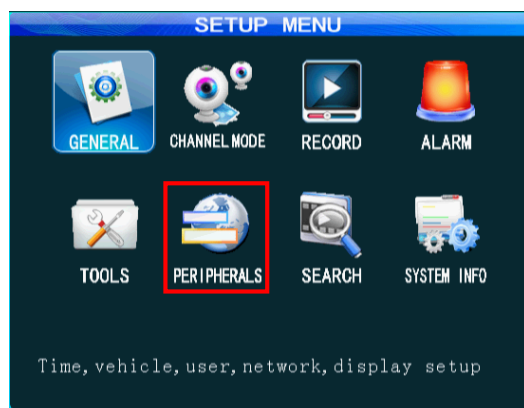
4

Step 2: Click the NETWORK icon and through the Figure 5:

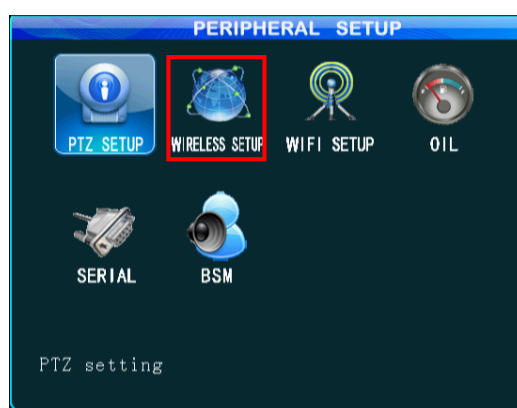
1. Server Address IP settings, fill in the **static external network IP** in Server Addr
2. Control Port settings, usually the default port value is 6608



5



6



7

Step 3: Click: to click PREIPHERALS icon and WIRELESS SETUP icon (shown in figure 6 &7) and

enter to the Figure 8, and you need to change following settings.

Wireless: ON

Type: WCDMA/FDD-LTE

For the parameters needed below **Type: WCDMA/FDD-LTE**, please contact with your local 3G/4G operators for those information: APN, Center-Num, User Name, Password. After you fill out the OK, SAVE.

3G

4G

3G SETUP

Wireless: ON

Type: WCDMA

APN: 3gnet

Center-Num: *99#

User Name: card

Password: ****

SAVE

3G SETUP

Wireless: ON

Type: FDD-LTE

APN:

Center-Num: EVDO/LTE

User Name: card

Password: ****

NetMode Sel: AUTO

Auth Mode: None

SAVE

8

Step 4: Go back to Video Review Windows by Return button and press the INFO button, figure

9 will pop out :

SYSTEM INFO

SW Ver: T15072401	MCU Ver: V507202
HW Ver: JH4HD-M-V001	GPS-M: INVALID
GPS-sign:	
Speed: 0km/h	Plus Num: 0
Disk Temp: 42°C	Ext Temp: 0.00°C
SIM-Card: NONE	SIM-sign:
3G-M: MU609	3G-State: NO DIAL
WIFI-M: EXIST	
WIFI-sign: 0db	
Center-L: NO LINK	
COM1 Device: NONE	INTERCOM-L: NO LINK
IO-State: 1:L 2:L 3:L 4:L 5:L 6:L 7:L 8:L	
Serial-Num: 00-00-00-00-00-01-75-c6	
IMEI: 357784046793921	

NEXT RETURN

9

- a. SIM-Card: must be the EXIST;
- b. SIM-sign: value must be greater than or equal to 5.
- c. 3G-M must show: EXIST;
- d. 3G-State: must show OK;
- e. Center-L must show: LINK SUCCESS;

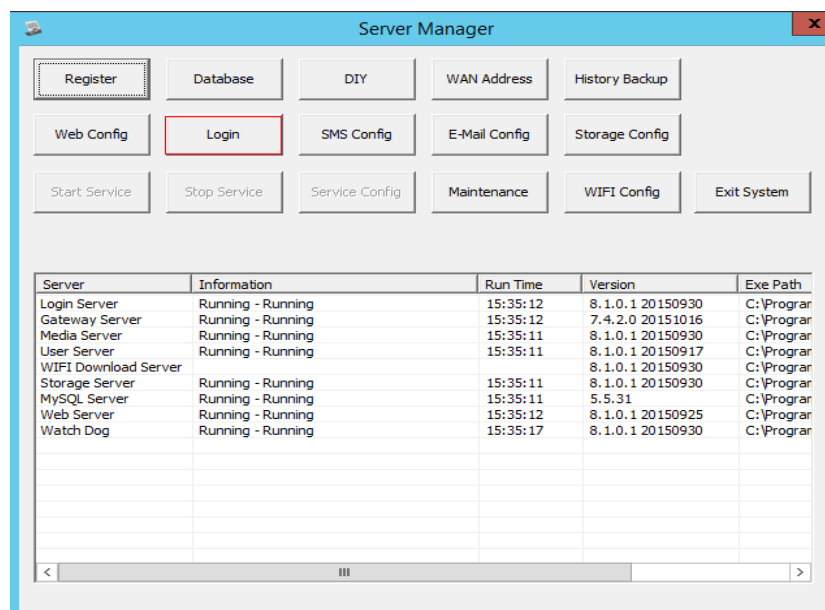
If you see the above status results, Congratulations as this device is ready for work.

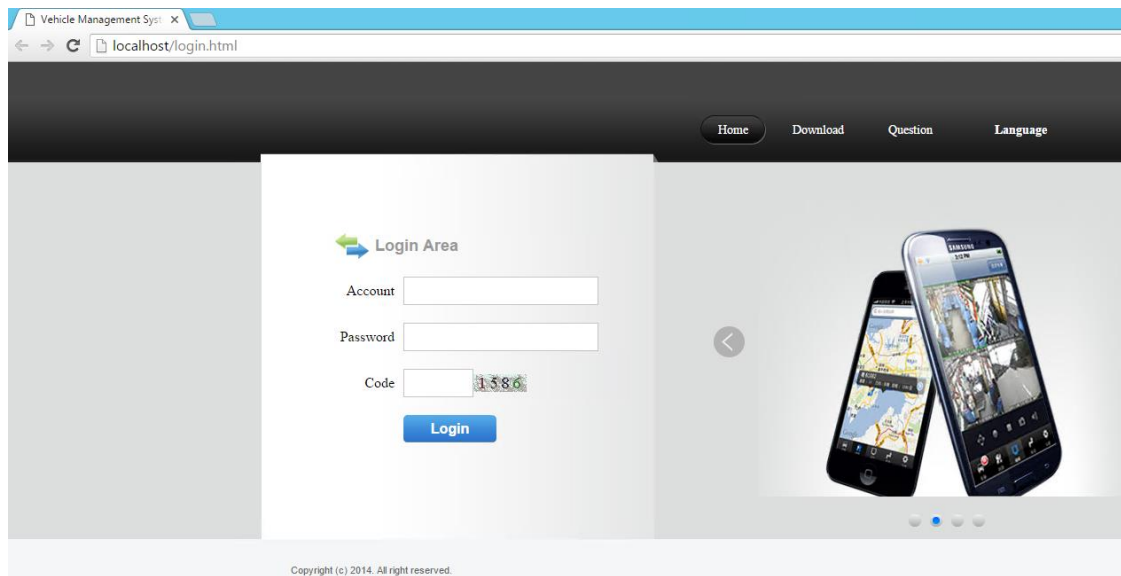
SERVER & CLIENT SOFTWARE

Step1. Open your Server Manager

Click **Login** with following information

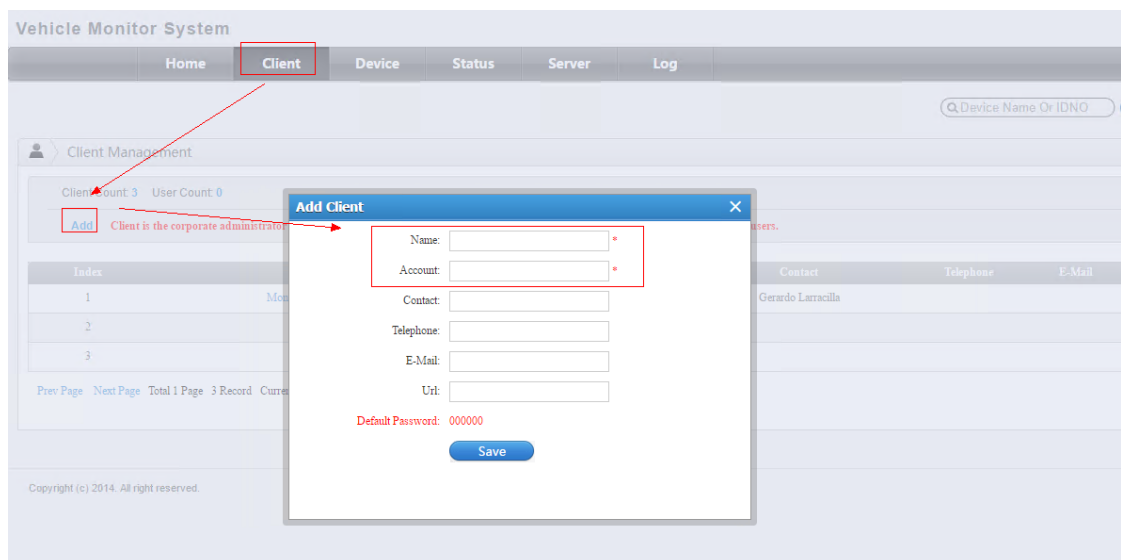
Account: admin, default password: admin (shown in figure 11)





11

Step 2.Add client account



12

(For example: Name: xxx company, Account: test)

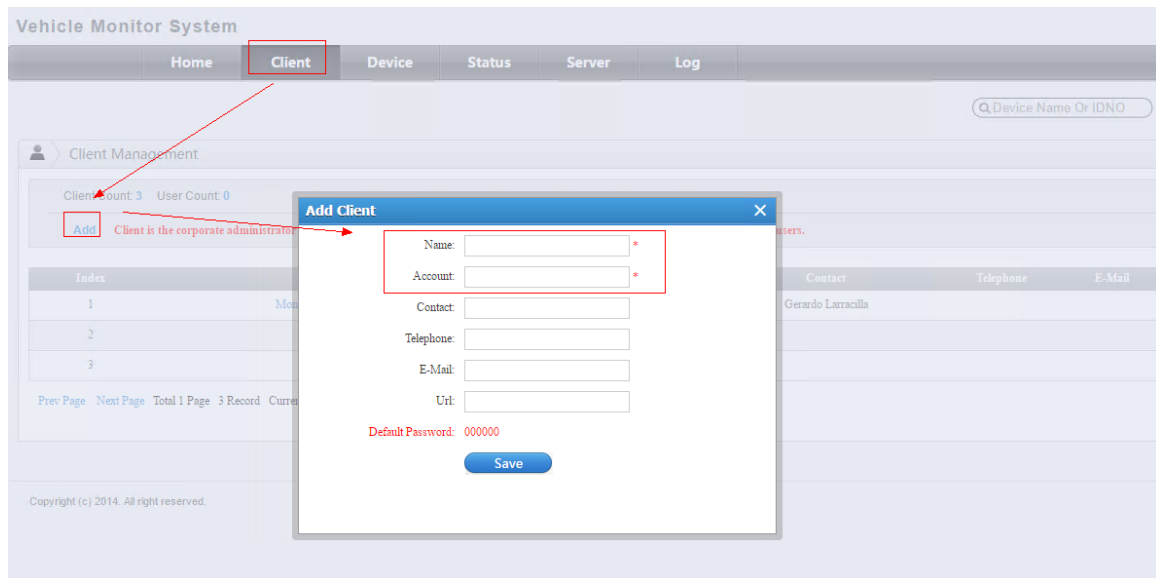
Step 3.Add device

Select "device management" page

Click "Add", pop-up a terminal window, And you can input terminal Name (Custom, for example: 11111), IDNO must with MDVR DEV.NUM maintain consistent. (for example the number 11111, same with MDVR "DEV.NUM") , Then save.



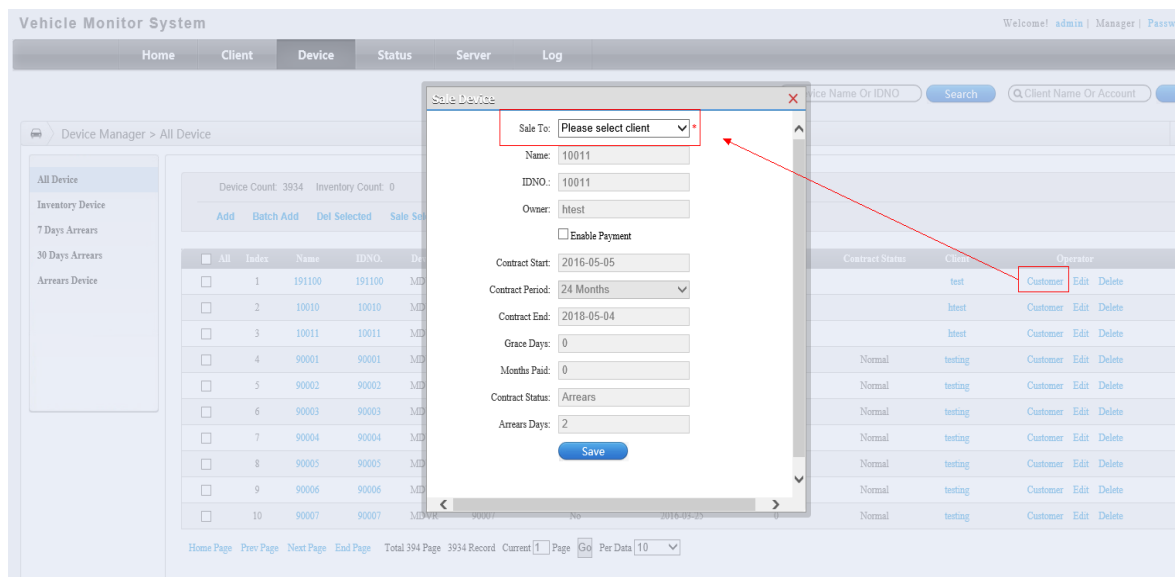
MOBILE DVR FOR VEHICLE SURVEILLANCE



13

Step 4. Single terminal allocation

Choose to the terminal, click on the "customer", the allocation of the dialog box pops up



14

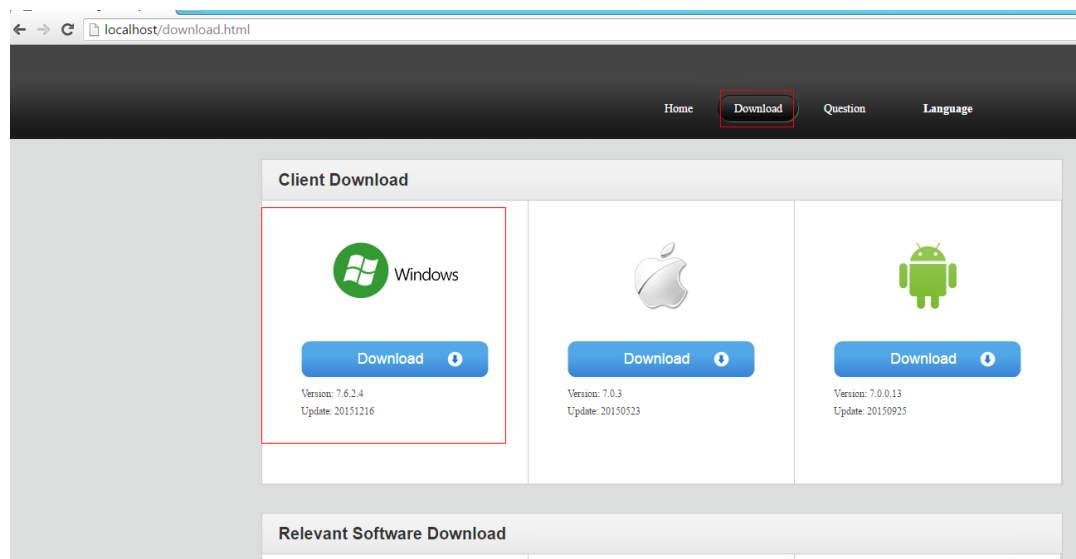
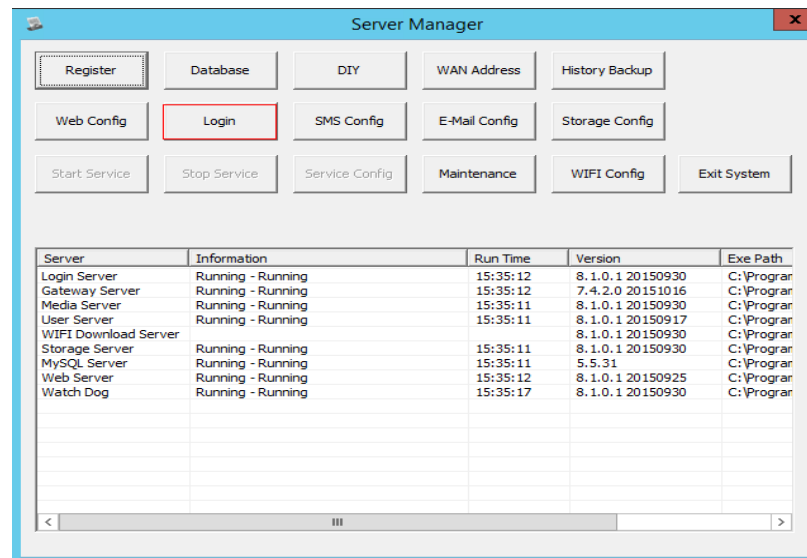
Select customers for allocation (for example the "xxx company"), save, allocation success,

Step 5. Login client system

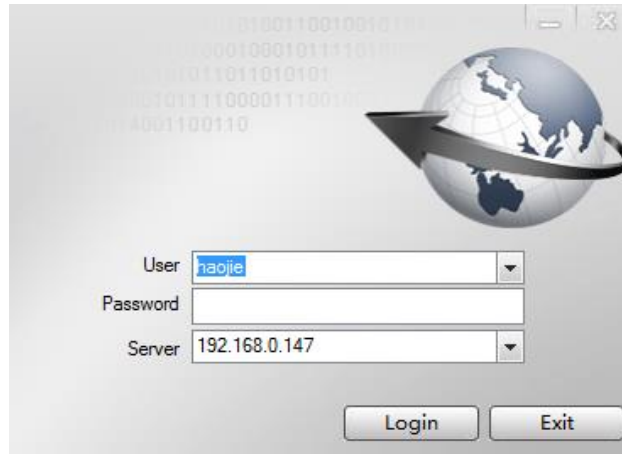
Download and install client software

PS: because we always release new version of Client software constantly, we would suggest

Users to acquire the download link of Client software from our team.



Step 6. After a successful installation, please run the Client software and use the added user (for example the account "test"), the default password: 000000, the server: (fill in the your server IP)



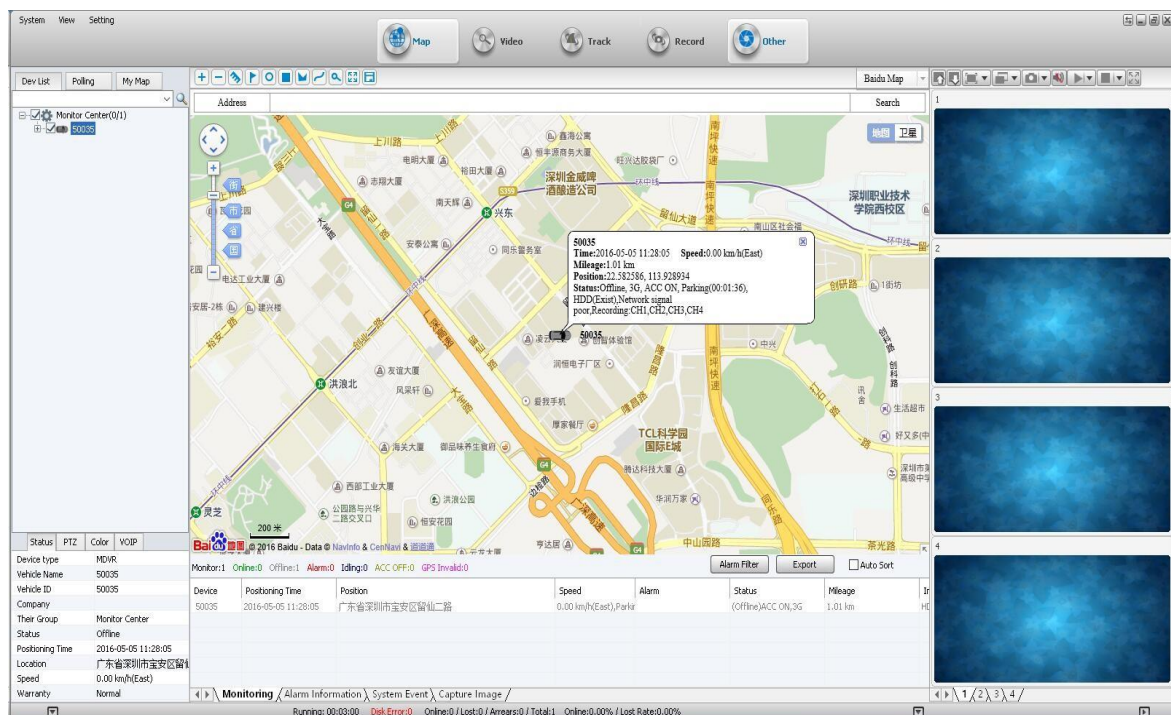
User: haojie

Password:

Server: 192.168.0.147

Login Exit

Now you can use the client monitor vehicle.



System View Setting

Map Video Track Record Other

Dev List Polling My Map

Address Search

Monitor Center(0/1)

2016 Baidu - Data © NavInfo & Cesium & 高德地图

S9035
Time: 2016-05-05 11:28:05 Speed: 0.00 km/h(East)
Mileage: 1.01 km
Position: 22.382186, 111.928914
Status: Offline, 3G, ACC ON, Parking(00:01:36),
HDD(Ext), Network signal poor, Recording CH1, CH2, CH3, CH4

200米

Monitoring / Alarm Information / System Event / Capture Image /

Running: 00:03:00 Disk Error: 0 Online: 0 / Lost: 0 / Arrives: 0 / Total: 1 Online: 0.00% / Lost Rate: 0.00%

We hope those are satisfactory solutions for you, if you have any questions, why not contact our team- as we are more than happy to help.



MOBILE DVR FOR VEHICLE SURVEILLANCE